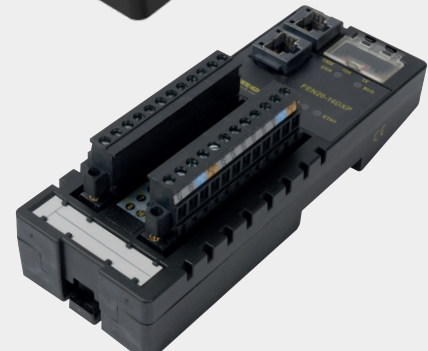


TURCK

Your Global Automation Partner

FEN20 Multiprotocol I/O Modules Family Overview



FEN20 Family of Block I/O Modules

Smarter I/O Starts at the Cabinet Level

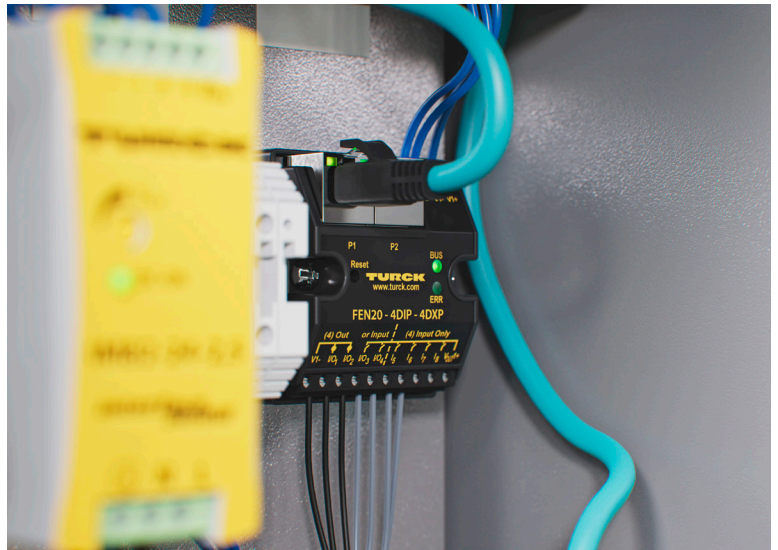
Designed specifically for control cabinet applications, the FEN20 family delivers compact, multiprotocol performance in an IP20 form factor, making integration straightforward without sacrificing capability. Whether you're optimizing an existing system or building from the ground up, FEN20 devices give you the flexibility and control modern automation demands.

At the core is seamless communication. With multiprotocol, native support for Modbus TCP, EtherNet/IP, and PROFINET, including system redundancy, you can standardize across platforms and reduce network headaches. One device, multiple protocols, zero compromise.

Configuration is just as efficient. Fully compatible with TURCK's ARGEE software, FEN20 devices enable rapid setup and intuitive device management. Users can implement Field Logic Control (FLC) directly on the device, reducing PLC load and improving system responsiveness. Using TURCK's integrated TAS web server, engineers can access, configure and monitor devices directly through a standard browser.

Benefits:

- Streamlined communication across major industrial Ethernet protocols
- IO-Link capabilities (depending on variant) provide easy configuration, device monitoring, and simpler device replacement
- Integrated device management for faster commissioning
- ARGEE-enabled Field Logic Control for smarter, decentralized automation
- Compact IP20 design ideal for control cabinet environments
- Reduces load on the PLC
- Integrated web server via free TURCK Automation Suite (TAS) software



Web Server



The FEN20 web server provides a comprehensive interface for monitoring and configuring station operations with ease. Users can quickly perform station diagnostics, including identifying issues such as short circuits, ensuring rapid troubleshooting and minimal downtime.

The interface offers direct access to the device's data sheet for convenient reference, along with detailed station information such as type and firmware version. Network configuration settings, including IP address management, are easily accessible, allowing seamless integration into existing systems. Additionally, users can adjust station configuration parameters like diagnostic settings and fine-tune individual channel settings, such as inverting an input signal.

General data

IP Rating	IP20
Protocol	Multiprotocol with Automatic Detection
Fieldbus Connection	2 x RJ45
Signal and Power Connection	Screw Terminal
Housing Material	PA6-GF30
ARGEE Compatible	Yes

Part Number Selection

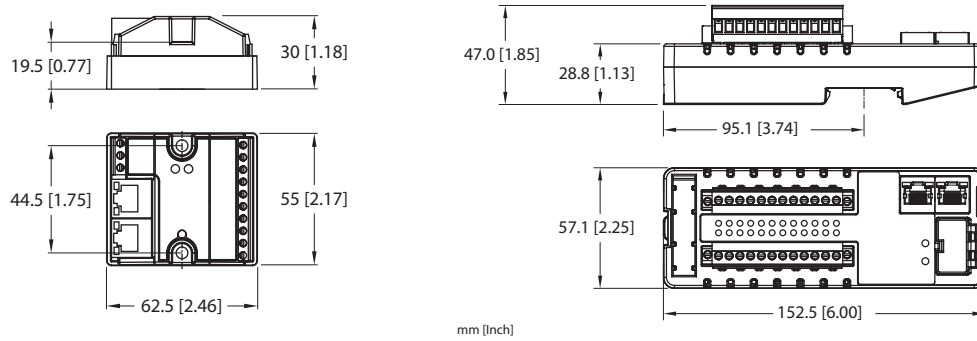
ID	Part Number	Description	IO	Size	Mounting	Voltage Groups	Voltage Range	Temperature Range
200011348	FEN20-8IOL	IO-Link Master	8 IO-Link Master/ 16 Universal Digital	57 mm x 152 mm x 46 mm	DIN Rail	2 with Shared Ground	18 - 30 VDC	-25...+60 °C
6814140	FEN20-4IOL	IO-Link Master	4 IO-Link Master/ 4 Digital Inputs	62 mm x 55 mm x 30 mm	Flat	1	18 - 30 VDC	-25...+70 °C
6814142	FEN20-4IOL-DIN	IO-Link Master	4 IO-Link Master/ 4 Digital Inputs	62 mm x 55 mm x 30 mm	DIN Rail	1	18 - 30 VDC	-25...+70 °C
6931089	FEN20-16DXP	Digital Inputs/ Outputs	16 Universal Digital (PNP)	57 mm x 152 mm x 46 mm	DIN Rail	3 Galvanically Isolated	12 - 30 VDC	-40...+70 °C
6931090	FEN20-4DIP-4DXP	Digital Inputs/ Outputs	4 Digital Inputs + 4 Universal Digital (PNP)	62 mm x 55 mm x 30 mm	Flat	1	12 - 30 VDC	-40...+70 °C
6931092	FEN20-4DIP-4DXP-DIN	Digital Inputs/ Outputs	4 Digital Inputs + 4 Universal Digital (PNP)	62 mm x 55 mm x 30 mm	DIN Rail	1	12 - 30 VDC	-40...+70 °C
6814129	FEN20-4DIN-4DXN	Digital Inputs/ Outputs	4 Digital Inputs + 4 Universal Digital (NPN)	62 mm x 55 mm x 30 mm	Flat	1	12 - 30 VDC	-40...+70 °C
6814128	FEN20-4DIN-4DXN-DIN	Digital Inputs/ Outputs	4 Digital Inputs + 4 Universal Digital (NPN)	62 mm x 55 mm x 30 mm	DIN Rail	1	12 - 30 VDC	-40...+70 °C
6931305	FEN20-EN1	Ethernet Spanner	8 Digital Inputs	62 mm x 55 mm x 30 mm	Flat	1	12 - 30 VDC	-40...+70 °C
6931320	FEN20-EN1-DIN	Ethernet Spanner	8 Digital Inputs	62 mm x 55 mm x 30 mm	DIN Rail	1	12 - 30 VDC	-40...+70 °C

Hubs

ID	Part Number	Description	IO	Size	Mounting	Voltage Groups	Voltage Range	Temperature Range
100028254	FIL20-16DXP	IO-Link IO Hub	16 Universal Digital (PNP)	57 mm x 152 mm x 46 mm	DIN Rail	2 Galvanically Isolated	18 - 30 VDC	-40...+70 °C
100005646	FIL20-8DXP	IO-Link IO Hub	8 Universal Digital (PNP)	62 mm x 55 mm x 23 mm	Flat	1	18 - 30 VDC	-40...+70 °C
100005648	FIL20-8DXP-DIN	IO-Link IO Hub	8 Universal Digital (PNP)	62 mm x 55 mm x 34 mm	DIN Rail	1	18 - 30 VDC	-40...+70 °C
100005647	FIL20-8DXP-E	IO-Link IO Hub	8 Universal Digital (PNP)	62 mm x 55 mm x 43 mm	Panel mount	1	18 - 30 VDC	-40...+70 °C

FEN20 Family Overview

Dimensional Drawings



Accessories

Part Number	ID	Description
FKSDD RJ45SF 44/ST	U2-21428	Panel Feed-through Ethernet Receptacle
RJ45 RJ45 441-0.5M	U-33308	Industrial Ethernet Patch Cable
WRJ45ES RJ45S 441-0.5M	U-77105	Industrial Ethernet Patch Cable
RSF 30-1M	U2306-2	Panel Receptacle
RSF 40-1M	U2347	Panel Receptacle

Over 30 subsidiaries and
60 representatives worldwide!