

TURCK

Your Global Automation Partner

Focus+ Products Overview



Table of Contents

Focus+ Program Introduction	4
M8 Connectivity Family	5
M8 Straight Cordsets - Yellow PVC Jacket/Yellow Plug Body	5
M8 Front Mount Receptacles	6
M8 Splitters	6
M8 Field Wireables	7
M8 Closure Caps	7
M12 Connectivity Family	8
M12 Cordsets - Black PVC Jacket/Black Plug Body	8-9
M12 Straight Cordsets - Gray PVC Jacket/Yellow Plug Body	9
M8 to M12 Straight Cordsets - Yellow PVC Jacket/Yellow Plug Body	10
M12 Receptacles	10-11
M12 Splitters	11
M12 Junction Box	12
M12 Field Wireables	12
M12 Closure Caps	13
M23 Multifast Connectivity Family	14
M23 Multifast Homerun Cables	14
M23 Multifast Receptacles	14
Minifast Connectivity Family	15
7/8" Minifast Straight Cordsets - Yellow PVC Jacket/Yellow Plug Body	15-16
7/8" Minifast Front Mount Receptacles	16
7/8" Minifast Tees	17
7/8" Minifast Field Wireables	17
7/8" Minifast Closure Caps	18
Ethernet Connectivity Family	19
Industrial Ethernet Straight Cordsets - Teal TPE Jacket/Blue-Gray Plug Body	19-20
Ethernet Panel, Receptacles & Field Wireable Accessories	21
PROFINET Connectivity Family	22
PROFINET Straight Cordsets – Green TPE Jacket/Black Plug Body	22
Valve Plug Connectivity Family	23
Form A (18 mm) Connectors	24
Industrial Cable	24
Cut to Length Cable	24-25
Inductive Proximity Sensors Family	26
Miniature Sensors, 5 & 8 mm Barrel	26
Inductive Sensors, 12 mm Barrel	27
Inductive Sensors, 18 mm Barrel	28
Inductive Sensors, 30 mm Barrel	29
Inductive Sensors, Rectangular	30
Capacitive Sensors Family	31
Barrel and Rectangular Housing	31
Magnetic Field Sensors Family	32
Cylinder Position Sensors	32
Condition Monitoring Sensors Family	33
Vibration, Temperature, Humidity Options	33

Table of Contents

Flow Sensors Family	34
Air and Liquid Sensing Insertion Style Flow Sensors	34
Inclinometer Family	35
Angular Sensor, QR20 Housing	35
Linear Sensors Family	36
Inductive, Non-contact Linear Sensors	36
Accessories	36
Pressure Sensors Family	37
Rotatable, Non-rotatable sensor Options	37
Distance Radar Sensor	38
Non-contact Presence Detection	38
Rotary Encoders	39
Non-contact Presence Detection	39
Rotary Inductive Position Sensors Family	40
QR14 & QR24, Non-contact Rotary Sensors	40
Accessories	41
Temperature Sensors Family	42
Programmable & Probe Versions	42
Mounting Accessories	42
Ultrasonic Sensors Family	43
18 mm Barrel with IO-Link	43
Valve Sensors Family	44
Sensors for Rotary Actuators	44
Fieldbus Solutions	45
Compact Multiprotocol I/O Module & Station	45
Multiprotocol IO-Link Master	46
IO-Link Hubs, In Cabinet/On Machine	46
Industrial Ethernet Switches	47
IP67 Safety I/O for EtherNet/IP & CIP Safety	47
BL20 Modular IO System	48
BL67 Modular IO System	49
UHF RFID Solutions	50
Q180 UHF Transceiver/Read/Write Device & Accessories	50
UHF RFID Coaxial Antenna Cables	50
UHF RFID Tags	51
860-960 MHz	51
HF RFID Solutions	52
HF Transceivers, BL Ident	52
BL Ident Cables	52
RFID Interfaces, BL Ident	53
HF RFID Tags, 13.56 MHz	53
HF Transceivers	54
M18, M30, Q40 Options with IO-Link	54
Q130 All-In-One HF RFID Transceiver	54

Focus+ Program Introduction

Turck's Focus+ Program – Where the Focus is on Your Success

Turck recognizes that product reliability and availability are two cornerstones of a successful business. Whether you are a distributor, OEM, manage a warehouse distribution center, or oversee a large factory, Turck's Focus+ Program serves as reliable source for some of our most used automation solutions.

What is Focus+?

This new Focus+ offering is a highly managed stocking program with a commitment from Turck to ensure reliable product availability and timely replenishment. Maintaining the right level of inventory and procurement is key. We have narrowed down the product offering for this program to our most popular sensor, fieldbus, RFID, encoders, instrumentation, connectivity solutions and more. Our focus will be on this curated group of solutions that will cover a wide range of applications. If you can't find what you are looking for here, Turck offers a wide range of other rugged automation products. Just reach out to your local Turck distributor to learn about our breadth of solutions. Availability may vary.

Benefits:

- Creates more reliability and stability around available products
- Ensures restocking based on demand, minimizing disruption
- Focuses on solutions that are ready to be shipped quickly
- Meets the needs of a wide range of applications
- Partners with our distributors to ensure a healthy ready-to-ship inventory
- Provides minimal lead times

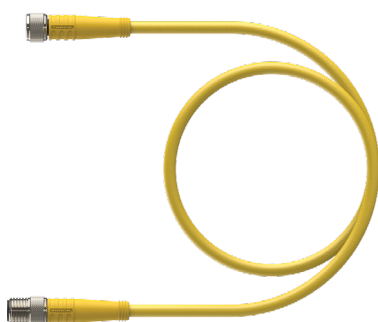


M8 Connectivity Family

M8 Straight Cordsets - Yellow PVC Jacket/Yellow Plug Body

Turck's Focus+ series of compact M8 connectors and cordsets offer 3- and 4-pin versions in a range of straight male or female types. All cordsets are rated IP68 for harsh environments. This general-purpose cable comes in a yellow PVC jacket and offers 24–26 gauge wires, TPU plug body and threaded metal coupling nuts. These Focus+ solutions carry a -40 cold bend cable rating and multiple flame ratings. We use the highest quality cable, plastics and metal components for longevity and durability. Adherence to international design standards and approvals offers peace of mind for international solutions. Custom cordset solutions are available upon request.

- Compact size to fit applications with a tight footprint
- Versions that are cold bend and flame rated for application flexibility
- IP68 for harsh environments
- Multiple approvals: UL 2238, CSA C22.2 No. 182.3, CE, UKCA, RoHS
- Variants that are Flexlife® and C-Track approved



Material ID	Part Number	Pin Count	Cable Length	Gender	Orientation	Cable Type
U2515-29	PKG 3M-2	3-pin	2 m	Female	Straight	PVC/Yellow
U2515-71	PKG 3M-5	3-pin	5 m	Female	Straight	PVC/Yellow
U2515-22	PKG 3M-10	3-pin	10 m	Female	Straight	PVC/Yellow
U0135-6	PSG 3M-2	3-pin	2 m	Male	Straight	PVC/Yellow
U0135-66	PSG 3M-5	3-pin	5 m	Male	Straight	PVC/Yellow
U0135-5	PSG 3M-10	3-pin	10 m	Male	Straight	PVC/Yellow
U2515-84	PKG 3M-1-PSG 3M	3-pin	1 m	Extension	Straight	PVC/Yellow
U2515-20	PKG 3M-2-PSG 3M	3-pin	2 m	Extension	Straight	PVC/Yellow
U2516-36	PKG 3M-3-PSG 3M	3-pin	3 m	Extension	Straight	PVC/Yellow
U2516-35	PKG 3M-5-PSG 3M	3-pin	5 m	Extension	Straight	PVC/Yellow
U2503-14	PKG 4M-2	4-pin	2 m	Female	Straight	PVC/Yellow
U0058-10	PKG 4M-5	4-pin	5 m	Female	Straight	PVC/Yellow
U99-10780	PKG 4M-10	4-pin	10 m	Female	Straight	PVC/Yellow
U0136-00	PSG 4M-2	4-pin	2 m	Male	Straight	PVC/Yellow
U2-05064	PSG 4M-5	4-pin	5 m	Male	Straight	PVC/Yellow
U99-11342	PSG 4M-10	4-pin	10 m	Male	Straight	PVC/Yellow
U99-17490	PKG 4M-1-PSG 4M	4-pin	1 m	Extension	Straight	PVC/Yellow
U99-10815	PKG 4M-2-PSG 4M	4-pin	2 m	Extension	Straight	PVC/Yellow
U0875-24	PKG 4M-3-PSG 4M	4-pin	3 m	Extension	Straight	PVC/Yellow
U0881-44	PKG 4M-5-PSG 4M	4-pin	5 m	Extension	Straight	PVC/Yellow

M8 Connectivity Family

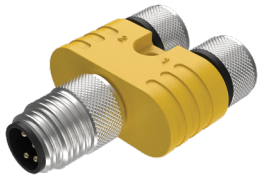
M8 Front Mount Receptacles



- Provides a mating point for M8 cables
- Male and female types
- Front mount with M8x0.5 mounting thread
- 3 and 4-pin versions

Material ID	Part Number	Pin Count	Lead Length (Meters)	Gender	Mounting Style	Mounting Thread
U1014-00	MFKS 3-1	3-pin	1	Female	Front	M8x0.5
U99-17667	MFSS 3-1	3-pin	1	Male	Front	M8x0.5
U99-17475	MFKS 4-1	4-pin	1	Female	Front	M8x0.5
U99-17478	MFSS 4-1	4-pin	1	Male	Front	M8x0.5

M8 Splitters



- M8 “Y” compact splitters
- Provides installation flexibility for industrial applications
- Rated IP67 for rugged environments
- Standard wiring for consolidation of two signals into one cable

Material ID	Part Number	Homerun Connector	Port Connectors
U0932-33	YP2-MFS 4/2MFK 3	Male 4-pin	Female 3-pin
U0117-1	VBRS 4.4-2SKM 3	Male 4-pin	Female 3-pin

M8 Connectivity Family

M8 Field Wireables



- M8 connection
- Rated voltage: 75 VDC 60 VAC
- M8 female or male connector versions
- Plastic housing
- Protection class: NEMA 1, 3, 4, 6P, IEC IP67

Material ID	Part Number	Pin Count	Gender	Cable Grip Range
U0879-54	B 5133-0	3-pin	Female	3.5-5 mm
U6512	BS 5133-0	3-pin	Male	3.5-5 mm
U0879-55	B 5143-0	4-pin	Female	3.5-5 mm
U6513	BS 5143-0	4-pin	Male	3.5-5 mm

M8 Closure Caps



- Dust/closure cap
- 8 per bag
- Black plastic
- Threaded Phillips head

Material ID	Part Number	Lanyard Style	Closure Cap Material	Mates to
U6427	PSGM-CC (8/BAG)	No lanyard	Black plastic	Female

M12 Connectivity Family

M12 Cordsets - Black PVC Jacket/Black Plug Body

Turck's Focus+ product offering includes our popular M12 cordsets. The industry standard for years, these durable M12 cordsets are easy to install and stand up to harsh environments. Offered in 4, 5 and 8 pin counts. Maintain reliable data communication between devices, on machines and across networks. Multiple cable lengths offered to meet a variety of application needs. Custom cordset solutions are available upon request.

- Assortment of cable types and wire gauge sizes to fit applications with a tight footprint
- Overmolded design
- Available in straight and right angle options
- Variants rated up to IP69K for washdown
- UL rated
- High flex rating



Material ID	Part Number	Pin Count	Cable Length	Gender	Orientation	Cable Type
U-29271	RK 4.4T-2/S760/S771	4-pin	2 m	Female	Straight	PVC/Black
U0930-80	RK 4.4T-5/S760/S771	4-pin	5 m	Female	Straight	PVC/Black
U-05651	RK 4.4T-10/S760/S771	4-pin	10 m	Female	Straight	PVC/Black
U-91282	RK 4.4T-15/S760/S771	4-pin	15 m	Female	Straight	PVC/Black
U-99270	RK 4.4T-20/S760/S771	4-pin	20 m	Female	Straight	PVC/Black
U-34265	WK 4.4T-2/S760/S771	4-pin	2 m	Female	Right Angle	PVC/Black
U0987-18	WK 4.4T-5/S760/S771	4-pin	5 m	Female	Right Angle	PVC/Black
U-11622	WK 4.4T-10/S760/S771	4-pin	10 m	Female	Right Angle	PVC/Black
U-68435	RS 4.4T-2/S760/S771	4-pin	2 m	Male	Straight	PVC/Black
U-88140	RS 4.4T-5/S760/S771	4-pin	5 m	Male	Straight	PVC/Black
U-82562	RS 4.4T-10/S760/S771	4-pin	10 m	Male	Straight	PVC/Black
U-16009	RK 4.4T-1-RS 4.4T/S760/S771	4-pin	1 m	Extension	Straight	PVC/Black
U2-09882	RK 4.4T-2-RS 4.4T/S760/S771	4-pin	2 m	Extension	Straight	PVC/Black
U-11239	RK 4.4T-3-RS 4.4T/S760/S771	4-pin	3 m	Extension	Straight	PVC/Black
U-08473	RK 4.4T-5-RS 4.4T/S760/S771	4-pin	5 m	Extension	Straight	PVC/Black
U2-10000	RK 4.4T-10-RS 4.4T/S760/S771	4-pin	10 m	Extension	Straight	PVC/Black
U-94346	WK 4.4T-1-RS 4.4T/S760/S771	4-pin	1 m	Extension	Right Angle/Straight	PVC/Black

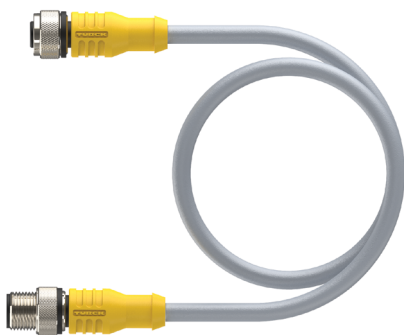
Continued on next page.

M12 Connectivity Family

M12 Cordsets - Black PVC Jacket/Black Plug Body (continued)

Material ID	Part Number	Pin Count	Cable Length	Gender	Orientation	Cable Type
U-89352	WK 4.4T-2-RS 4.4T/S760/S771	4-pin	2 m	Extension	Right Angle/Straight	PVC/Black
UX05562	WK 4.4T-3-RS 4.4T/S760/S771	4-pin	3 m	Extension	Right Angle/Straight	PVC/Black
UX15497	WK 4.4T-5-RS 4.4T/S760/S771	4-pin	5 m	Extension	Right Angle/Straight	PVC/Black
UX19218	WK 4.4T-10-RS 4.4T/S760/S771	4-pin	10 m	Extension	Right Angle/Straight	PVC/Black
U0969-33	RK 4.5T-2/S760/S771	5-pin	2 m	Female	Straight	PVC/Black
U-09403	RK 4.5T-5/S760/S771	5-pin	5 m	Female	Straight	PVC/Black
U-11621	RK 4.5T-10/S760/S771	5-pin	10 m	Female	Straight	PVC/Black
100033166	RK 4.5T-15/S760/S771	5-pin	15 m	Female	Straight	PVC/Black
U-58949	RK 4.5T-20/S760/S771	5-pin	20 m	Female	Straight	PVC/Black
U2-06189	RS 4.5T-2/S760/S771	5-pin	2 m	Male	Straight	PVC/Black
U-88141	RS 4.5T-5/S760/S771	5-pin	5 m	Male	Straight	PVC/Black
U-75461	RS 4.5T-10/S760/S771	5-pin	10 m	Male	Straight	PVC/Black
U-79229	RK 4.5T-1-RS 4.5T/S760/S771	5-pin	1 m	Extension	Straight	PVC/Black
U0967-27	RK 4.5T-2-RS 4.5T/S760/S771	5-pin	2 m	Extension	Straight	PVC/Black
U-73552	RK 4.5T-3-RS 4.5T/S760/S771	5-pin	3 m	Extension	Straight	PVC/Black
U-79001	RK 4.5T-5-RS 4.5T/S760/S771	5-pin	5 m	Extension	Straight	PVC/Black
U-32671	RK 4.5T-10-RS 4.5T/S760/S771	5-pin	10 m	Extension	Straight	PVC/Black

M12 Straight Cordsets - Gray PVC Jacket/Yellow Plug Body

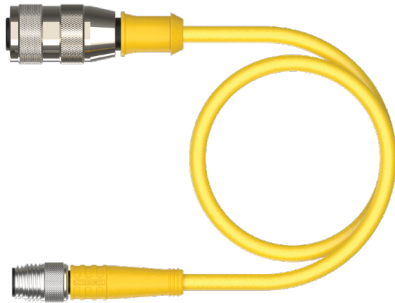


- Assortment of cable types and wire gauge sizes to fit applications with a tight footprint
- Overmolded design
- Variants rated up to IP69K for washdown
- UL rated
- High flex rating

Material ID	Part Number	Pin Count	Cable Length	Gender	Orientation	Cable Type
U5311-50	RKC 8T-2	8-pin	2 m	Female	Straight	PVC/Gray
U5311-52	RKC 8T-5	8-pin	5 m	Female	Straight	PVC/Gray
U5311-73	RKC 8T-10	8-pin	10 m	Female	Straight	PVC/Gray
U2143-66	RSC 8T-2	8-pin	2 m	Male	Straight	PVC/Gray
U0894-04	RSC 8T-5	8-pin	5 m	Male	Straight	PVC/Gray
U99-12502	RSC 8T-10	8-pin	10 m	Male	Straight	PVC/Gray
U5311-56	RKC 8T-2-RSC 8T	8-pin	2 m	Extension	Straight	PVC/Gray
U5312-32	RKC 8T-3-RSC 8T	8-pin	3 m	Extension	Straight	PVC/Gray
U0932-32	RKC 8T-5-RSC 8T	8-pin	5 m	Extension	Straight	PVC/Gray
U99-11861	RKC 8T-10-RSC 8T	8-pin	10 m	Extension	Straight	PVC/Gray

M12 Connectivity Family

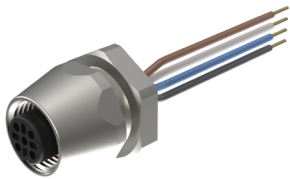
M8 to M12 Straight Cordsets – Yellow PVC Jacket/Yellow Plug Body



- Double-ended extension cordset
- 2 m length
- UL rated
- Overmolded design
- PVC jacket for durability

Material ID	Part Number	Pin Count	Cable Length	Gender	Orientation	Cable Type
U2151-04	RK 4T-2-PSG 3M	3-pin	2 m	Extension	Straight	PVC/Yellow
U2516-37	PKG 3M-2-RS 4T	3-pin	2 m	Extension	Straight	PVC/Yellow
U0875-88	RK 4.4T-2-PSG 4M	4-pin	2 m	Extension	Straight	PVC/Yellow
U0057-52	PKG 4M-2-RS 4.4T	4-pin	2 m	Extension	Straight	PVC/Yellow

M12 Receptacles



- 4, 5 or 8-pin options
- Nickel-plated brass or stainless-steel housing material
- Front, rear or feed-thru mounting options
- Rated for up to 250 V, 4 A
- NEMA 1, 3, 4, 6P and IEC IP68

Material ID	Part Number	Pin Count	Lead Length	Gender	Mounting Style	Mounting Thread
U9518-0	FK 4.4-1	4-pin	1 m	Female	Front	PG9
U5201-0	FK 4.4-3	4-pin	3 m	Female	Front	PG9
U2350-11	FS 4.4-1	4-pin	1 m	Male	Front	PG9
U9518	FK 4.4-1/18.25	4-pin	1 m	Female	Front	1/4-18NPT
U9507-0	FS 4.4-1/18.25	4-pin	1 m	Male	Front	1/4-18NPT
U4499-01	FKFD 4.4-1	4-pin	1 m	Female	Rear	PG9
U99-17469	FSFD 4.4-1	4-pin	1 m	Male	Rear	PG9
U1135-1	FK FS 4.4/M12	4-pin	N/A	Female to Male	Feed-thru	M12x1
U1114	FK 4.5-1	5-pin	1 m	Female	Front	PG9
U1113-2	FK 4.5-3	5-pin	3 m	Female	Front	PG9
U1110-1	FS 4.5-1	5-pin	1 m	Male	Front	PG9
U-52066	FK 4.5-1/18.25	5-pin	1 m	Female	Front	1/4-18NPT

Continued on next page.

M12 Connectivity Family

M12 Receptacles (Continued)

Material ID	Part Number	Pin Count	Lead Length	Gender	Mounting Style	Mounting Thread
U99-17457	FS 4.5-1/18.25	5-pin	1 m	Male	Front	1/4-18NPT
U99-17439	EKFD 4.5-1	5-pin	1 m	Female	Rear	PG9
U5118-62	ESFD 4.5-1	5-pin	1 m	Male	Rear	PG9
U1135	FK FS 4.5/M12	5-pin	N/A	Female to Male	Feed-thru	M12x1
U99-17433	FK 8-1	8-pin	1 m	Female	Front	PG9
U-05043	FK 8-3	8-pin	3 m	Female	Front	PG9
U99-17665	FS 8-1	8-pin	1 m	Male	Front	PG9
U99-17441	EKFD 8-1	8-pin	1 m	Female	Rear	PG9
U99-17471	ESFD 8-1	8-pin	1 m	Male	Rear	PG9
U1135-3	FK FS 8/M12	8-pin	N/A	Female to Male	Feed-thru	M12x1

M12 Splitters



- M12 size compact splitters for wiring consolidation
- Provides installation flexibility
- Standard wiring
- Rated IP67 for rugged environments

Material ID	Part Number	Homerun Connector	Port Connectors
U0098	YB2-FSM 4.4/2FKM 4	Male 4-wire	Female 3-wire
U2-07374	YBZ2-FSM4.4/2FK4	Male 4-wire	Female 3-wire
U0117	VBRS 4.4-2RK 4T-0.3/0.3	Male 4-wire	Female 3-wire
U0875-78	YB2-FSM 4.5-2FKM 4.5	Male 5-wire	Female 4-wire
U0932-69	YBZ2-FSM 4.5/2FKM 4.5/S771	Male 5-wire	Female 4-wire

M12 Connectivity Family

M12 Junction Box



- Rugged M12 junction box
- 10 – 30 VDC
- 4 port and 8 port options with 2 signals per port
- PNP LED options
- Rated up to IP69K when connected
- Side exit M23 home run connector

Material ID	Part Number	Number of Ports	Signals Per Port
E8033446	4MB12Z-5-CS19H	4-port	2 Signals Per Port
E8026486	4MB12Z-5P3-CS19H	4-port	2 Signals Per Port/PNP LED
E8033448	8MB12Z-5-CS19H	8-port	2 Signals Per Port
E8026482	8MB12Z-5P3-CS19H	8-port	2 Signals Per Port/PNP LED

M12 Field Wireables



- On-site termination for installation flexibility
- Quick disconnect when needed
- 4, 5 or 8-pin
- Male or female options
- Screw terminal termination style
- Rated IP67

Material ID	Part Number	Pin Count	Gender	Cable Grip Range
U6545	B 8141-0	4-pin	Female	4-6 mm
U6547	B 8141-0/PG 9	4-pin	Female	6-8 mm
U6550	BS 8141-0	4-pin	Male	4-6 mm
U6551	BS 8141-0/PG 9	4-pin	Male	6-8 mm
U6565	B 8151-0/PG9	5-pin	Female	4-8 mm
U6570	BS 8151-0/PG9	5-pin	Male	4-8 mm
U0885-26	B 8181-0	8-pin	Female	6-8 mm
U0885-25	BS 8181-0	8-pin	Male	6-8 mm

M12 Connectivity Family

M12 Closure Caps



- Dust/closure cap
- Loop, eyelet, and no lanyard options
- Variants that mate to male or female

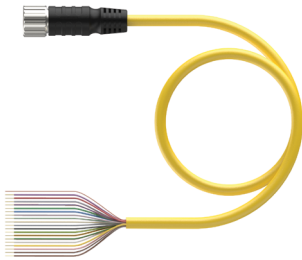
Material ID	Part Number	Lanyard Style	Closure Cap Material	Mates to
U5135-0	RK-CC	Loop	Nickel plated brass	Male
U5134-1	RS-CC	Loop	Nickel plated brass	Female
U0905-69	FK-CC	Eyelet	Nickel plated brass	Male
U0905-68	FS-CC	Eyelet	Nickel plated brass	Female
U0905-72	RK-MC	No lanyard	Nickel plated brass	Male
U0905-71	RS-MC	No lanyard	Nickel plated brass	Female
E7008	VZ 3 (8/BAG)	No lanyard	Plastic	Female



M23 Connectivity Family

M23 Homerun Cables

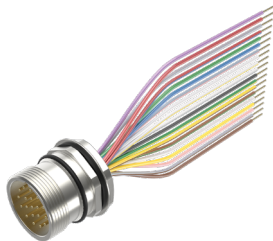
Turck's M23 Multifast® connectivity line offers rugged, high-density conductor solutions for industrial settings. As part of the Focus+ Program, Turck has included 19-pin home run cordsets and receptacles, purpose-built to facilitate fast and confident installation of its M12 junction boxes, which are also included in Focus+. You can use M23 products for other multi-conductor applications or converting hard wiring into quick disconnects. Custom cordset solutions are available upon request.



- Available in 5- & 10-meter lengths
- Yellow PVC cable jacket, black overmolded TPU plug body
- 19 pin count
- Rated IP67 for rugged applications
- Straight M23 connector

Material ID	Part Number	Pin Count	Cable Length	Gender	Orientation	Cable Typet
U4701-03	CKM 19-19-5	19-pin	5 m	Female	Straight	PVC/Yellow
U4704-10	CKM 19-19-10	19-pin	10 m	Female	Straight	PVC/Yellow
U4703-79	CSM CKM 19-19-5	19-pin	5 m	Extension	Straight	PVC/Yellow
U4704-55	CSM CKM 19-19-10	19-pin	10 m	Extension	Straight	PVC/Yellow

M23 Receptacles



- Panel mount connector for home run cable
- Nickel plated brass material
- 19-pin count
- Front mount

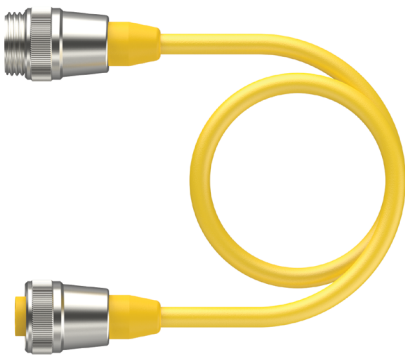
Material ID	Part Number	Pin Count	Lead Length	Gender	Mounting Style	Mounting Thread
U0898-84	CKF 19-19-3	19-pin	3 m	Female	Front	M20x1.5
U-03079	CSF 19-19-3	19-pin	3 m	Male	Front	M20x1.5

Minifast Connectivity Family

7/8" Minifast Straight Cordsets - Yellow PVC Jacket/Yellow Plug Body

Minifast cordsets come with a 7/8-inch connector and are ideal for rugged instrumentation applications. This selection of Focus+ cordsets offers a PVC jacket with extended agency approvals (Oil Res I/II, Tray rated) provide solutions for indoor and outdoor industrial environments. A variety of commonly used lengths makes selection easy. Male, female or extension versions provide flexibility. Custom cordset solutions are available upon request.

- 3, 4 or 5-pin
- Male, female or extension versions
- Yellow PVC cable jacket
- 18 AWG wire options
- Rated for up to 9 A, 600 V
- NEMA 1, 3, 4, 6P and IEC IP67, IP68, IP69, IP69K



Material ID	Part Number	Pin Count	Cable Length	Gender	Orientation	Cable Type
U2027	RKM 30-2M	3-pin	2 m	Female	Straight	PVC/Yellow
U2029-0	RKM 30-5M	3-pin	5 m	Female	Straight	PVC/Yellow
U2032-0	RKM 30-10M	3-pin	10 m	Female	Straight	PVC/Yellow
U2075-2	RSM 30-2M	3-pin	2 m	Male	Straight	PVC/Yellow
U2255	RSM RKM 30-2M	3-pin	2 m	Extension	Straight	PVC/Yellow
U2257	RSM RKM 30-5M	3-pin	5 m	Extension	Straight	PVC/Yellow
U2257-1	RSM RKM 30-10M	3-pin	10 m	Extension	Straight	PVC/Yellow
U2043	RKM 40-2M	4-pin	2 m	Female	Straight	PVC/Yellow
U2045-05	RKM 40-5M	4-pin	5 m	Female	Straight	PVC/Yellow
U2048	RKM 40-10M	4-pin	10 m	Female	Straight	PVC/Yellow
U2132	RKM 40-15M	4-pin	15 m	Female	Straight	PVC/Yellow
U2084-1	RSM 40-2M	4-pin	2 m	Male	Straight	PVC/Yellow
U2280-0	RSM RKM 40-2M	4-pin	2 m	Extension	Straight	PVC/Yellow
U2281	RSM RKM 40-5M	4-pin	5 m	Extension	Straight	PVC/Yellow
U2281-1	RSM RKM 40-10M	4-pin	10 m	Extension	Straight	PVC/Yellow
U2281-13	RSM RKM 40-15M	4-pin	15 m	Extension	Straight	PVC/Yellow
U2282-02	RSM RKM 40-20M	4-pin	20 m	Extension	Straight	PVC/Yellow

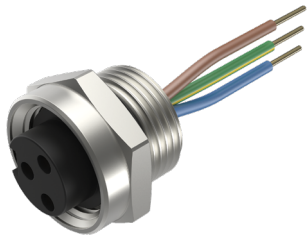
Continued on next page.

Minifast Connectivity Family

7/8" Minifast Straight Cordsets - Yellow PVC Jacket/Yellow Plug Body (Continued)

Material ID	Part Number	Pin Count	Cable Length	Gender	Orientation	Cable Type
U2056	RKM 50-2M	5-pin	2 m	Female	Straight	PVC/Yellow
U2059	RKM 50-5M	5-pin	5 m	Female	Straight	PVC/Yellow
U2060	RKM 50-10M	5-pin	10 m	Female	Straight	PVC/Yellow
U2091	RSM 50-2M	5-pin	2 m	Male	Straight	PVC/Yellow
U2282-0	RSM RKM 50-2M	5-pin	2 m	Extension	Straight	PVC/Yellow
U2282	RSM RKM 50-5M	5-pin	5 m	Extension	Straight	PVC/Yellow
U2283	RSM RKM 50-10M	5-pin	10 m	Extension	Straight	PVC/Yellow

7/8" Minifast Front Mount Receptacles

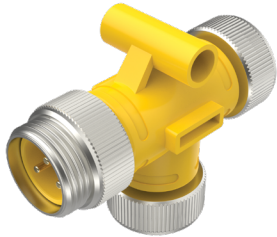


- 3, 4 or 5-pin
- 1 or 3-meter lead length
- 18 AWG wire options
- Front mount
- Rated for up to 9 A, 600 V
- NEMA 1, 3, 4, 6P and IEC IP67, IP68, IP69, IP69K

Material ID	Part Number	Pin Count	Lead Length	Gender	Mounting Style	Mounting Thread
U2456	RKF 30-1M	3-pin	1 m	Female	Front	1/2-14NPSM
U-03364	RKF 30-3M	3-pin	3 m	Female	Front	1/2-14NPSM
U0931-04	RKF 30-1M/NPT	3-pin	1 m	Female	Front	1/2-14NPT
U-09371	RKF 30-3M/NPT	3-pin	3 m	Female	Front	1/2-14NPT
U2306-2	RSF 30-1M	3-pin	1 m	Male	Front	1/2-14NPSM
U-01080	RSF 30-1M/NPT	3-pin	1 m	Male	Front	1/2-14NPT
U2303-1	RKF 40-1M	4-pin	1 m	Female	Front	1/2-14NPSM
U2303-3	RKF 40-3M	4-pin	3 m	Female	Front	1/2-14NPSM
U0884-85	RKF 40-1M/NPT	4-pin	1 m	Female	Front	1/2-14NPT
U0930-49	RKF 40-3M/NPT	4-pin	3 m	Female	Front	1/2-14NPT
U2347	RSF 40-1M	4-pin	1 m	Male	Front	1/2-14NPSM
U0909-79	RSF 40-1M/NPT	4-pin	1 m	Male	Front	1/2-14NPT
U2335	RKF 50-1M	5-pin	1 m	Female	Front	1/2-14NPSM
U2335-3	RKF 50-3M	5-pin	3 m	Female	Front	1/2-14NPSM
U0893-90	RKF 50-1M/NPT	5-pin	1 m	Female	Front	1/2-14NPT
U-00147	RKF 50-3M/NPT	5-pin	3 m	Female	Front	1/2-14NPT
U2309-39	RSF 50-1M	5-pin	1 m	Male	Front	1/2-14NPSM
U0902-55	RSF 50-1M/NPT	5-pin	1 m	Male	Front	1/2-14NPT

Minifast Connectivity Family

7/8" Minifast Tees



- 7/8" connectors, integral to tee body
- 3, 4 and 5-pin options
- Parallel wiring
- Rated for up to 250 V, 9 A
- NEMA 1, 3, 4, 6P and IEC IP67

Material ID	Part Number	Pin Count
U1061	RSM-2RKM 30	3-pin
U0140	RSM-2RKM 40	4-pin
U2109-9	RSM-2RKM 50	5-pin

7/8" Minifast Field Wireables



- Easy on-site termination provides installation flexibility
- 3, 4 or 5-pin
- Male or female
- 6-8 mm and 10-12 mm cable diameter range
- Rated for up to 12 A, 250 V
- IEC IP67

Material ID	Part Number	Pin Count	Gender	Cable Grip Range
U6310	B 4131-0/9	3-pin	Female	6-8 mm
U6315	BS 4131-0/9	3-pin	Male	6-8 mm
U6310-1	B 4131-0/13.5	3-pin	Female	10-12 mm
U6315-1	BS 4131-0/13.5	3-pin	Male	10-12 mm
U6410	B 4141-0/9	4-pin	Female	6-8 mm
U6415	BS 4141-0/9	4-pin	Male	6-8 mm
U6413	B 4141-0/13.5	4-pin	Female	10-12 mm
U6415-0	BS 4141-0/13.5	4-pin	Male	10-12 mm
U6417	B 4151-0/9	5-pin	Female	6-8 mm
U6419	BS 4151-0/9	5-pin	Male	6-8 mm
U6420	B 4151-0/13.5	5-pin	Female	10-12 mm
U6422	BS 4151-0/13.5	5-pin	Male	10-12 mm

Minifast Connectivity Family

7/8" Minifast Closure Caps



- Dust/closure cap
- Fits 7/8-inch
- Loop and eyelet style
- Threaded, hand tighten
- Stainless steel cap
- Nitrile gasket and o-ring

Material ID	Part Number	Lanyard Style	Closure Cap Material	Mates to
U5135	RKM-CC	Loop	Nickel plated brass	Male
U5134	RSM-CC	Loop	Nickel plated brass	Female
U0899-34	RKF-CC	Eyelet	Nickel plated brass	Male
U0899-35	RSF-CC	Eyelet	Nickel plated brass	Female

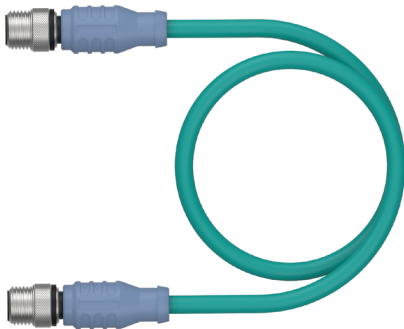


Ethernet Connectivity Family

Industrial Ethernet Straight Cordsets - Teal TPE Jacket/Blue-Gray Plug Body

Our Focus+ family of straight cordsets/cable assemblies are ideal for communication networks in industrial environments. Turck's cordsets are rugged solutions, reliably transmitting data between machines and devices. They come in either M8, M12 or RJ45 connector combinations with a secure overmolded plug body that protects against vibration. These cables offer up to IP69K ingress protection for washdown or harsh applications. Both shielded and unshielded versions are offered in a variety of cable lengths as part of the Focus+ Program. Custom cordset solutions are available upon request.

- Industrial TPE cable jacket
- Overmolded plug body
- 4 and 8-pin types
- Excellent oil resistance
- M8, M12 and RJ45 combinations
- Simplifies network commissioning



Material ID	Part Number	Pin Count	Termination Type	Cable Length	Orientation	Cable Type
U-55718	PSGS 4M PSGS 4M 4413-1M	4-pin	M8/M8	1 m	Straight	4413 - Stranded Shielded/2UTPx24 AWG
U-59336	PSGS 4M PSGS 4M 4413-2M	4-pin	M8/M8	2 m	Straight	4413 - Stranded Shielded/2UTPx24 AWG
U-91286	PSGS 4M PSGS 4M 4413-3M	4-pin	M8/M8	3 m	Straight	4413 - Stranded Shielded/2UTPx24 AWG
U-59340	PSGS 4M PSGS 4M 4413-5M	4-pin	M8/M8	5 m	Straight	4413 - Stranded Shielded/2UTPx24 AWG
U-59339	PSGS 4M PSGS 4M 4413-10M	4-pin	M8/M8	10 m	Straight	4413 - Stranded Shielded/2UTPx24 AWG
U-59341	PSGS 4M PSGS 4M 4413-15M	4-pin	M8/M8	15 m	Straight	4413 - Stranded Shielded/2UTPx24 AWG
U-59342	PSGS 4M PSGS 4M 4413-20M	4-pin	M8/M8	20 m	Straight	4413 - Stranded Shielded/2UTPx24 AWG
U-58839	RSSD PSGS 4M 4413-0.5M	4-pin	M8/M12	0.5 m	Straight	4413 - Stranded Shielded/2UTPx24 AWG
U-58840	RSSD PSGS 4M 4413-1M	4-pin	M8/M12	1 m	Straight	4413 - Stranded Shielded/2UTPx24 AWG
U-58841	RSSD PSGS 4M 4413-2M	4-pin	M8/M12	2 m	Straight	4413 - Stranded Shielded/2UTPx24 AWG
U-58842	RSSD PSGS 4M 4413-3M	4-pin	M8/M12	3 m	Straight	4413 - Stranded Shielded/2UTPx24 AWG
U2-23113	RSSD PSGS 4M 4413-5M	4-pin	M8/M12	5 m	Straight	4413 - Stranded Shielded/2UTPx24 AWG
U2-23522	RSSD PSGS 4M 4413-10M	4-pin	M8/M12	10 m	Straight	4413 - Stranded Shielded/2UTPx24 AWG
U-92472	RSSD PSGS 4M 4413-15M	4-pin	M8/M12	15 m	Straight	4413 - Stranded Shielded/2UTPx24 AWG
UX01426	RSSD PSGS 4M 4413-20M	4-pin	M8/M12	20 m	Straight	4413 - Stranded Shielded/2UTPx24 AWG
U-86583	PSGS 4M RJ45S 4413-0.5M	4-pin	M8/RJ45	0.5 m	Straight	4413 - Stranded Shielded/2UTPx24 AWG

Continued on next page.

Ethernet Connectivity Family

Industrial Ethernet Straight Cordsets - Teal TPE Jacket/Blue-Gray Plug Body (Continued)

Material ID	Part Number	Pin Count	Termination Type	Cable Length	Orientation	Cable Type
U-55725	PSGS 4M RJ45S 4413-1M	4-pin	M8/RJ45	1 m	Straight	4413 - Stranded Shielded/2UTPx24 AWG
U2-24205	PSGS 4M RJ45S 4413-2M	4-pin	M8/RJ45	2 m	Straight	4413 - Stranded Shielded/2UTPx24 AWG
U-92985	PSGS 4M RJ45S 4413-3M	4-pin	M8/RJ45	3 m	Straight	4413 - Stranded Shielded/2UTPx24 AWG
U-81787	PSGS 4M RJ45S 4413-5M	4-pin	M8/RJ45	5 m	Straight	4413 - Stranded Shielded/2UTPx24 AWG
U2-24201	PSGS 4M RJ45S 4413-10M	4-pin	M8/RJ45	10 m	Straight	4413 - Stranded Shielded/2UTPx24 AWG
U-94814	PSGS 4M RJ45S 4413-15M	4-pin	M8/RJ45	15 m	Straight	4413 - Stranded Shielded/2UTPx24 AWG
UX03780	PSGS 4M RJ45S 4413-20M	4-pin	M8/RJ45	20 m	Straight	4413 - Stranded Shielded/2UTPx24 AWG
U-08737	RSSD RJ45S 441-15M	4-pin	M12/RJ45	15 m	Straight	441 - Stranded Shielded/2UTPx24AWG
U-02773	RSSD RJ45S 441-20M	4-pin	M12/RJ45	20 m	Straight	441 - Stranded Shielded/2UTPx24AWG
U-06863	RJ45S FKSDDED 441-0.5M	4-pin	M12/M12	0.5 m	Straight	441 - Stranded Shielded/2UTPx24AWG
U-03569	RJ45S FKSDDED 441-1M	4-pin	M12/M12	1 m	Straight	441 - Stranded Shielded/2UTPx24AWG
U3-00229	RJ45S FKSDDED 441-2M	4-pin	M12/M12	2 m	Straight	441 - Stranded Shielded/2UTPx24AWG
U-05458	RJ45S RJ45S 441-0.5M	4-pin	RJ45/RJ45	0.5 m	Straight	441 - Stranded Shielded/2UTPx24AWG
U-06865	RJ45S RJ45S 441-1M	4-pin	RJ45/RJ45	1 m	Straight	441 - Stranded Shielded/2UTPx24AWG
U-06842	RJ45S RJ45S 441-2M	4-pin	RJ45/RJ45	2 m	Straight	441 - Stranded Shielded/2UTPx24AWG
U-06843	RJ45S RJ45S 441-3M	4-pin	RJ45/RJ45	3 m	Straight	441 - Stranded Shielded/2UTPx24AWG
U3-00689	RJ45S RJ45S 441-5M	4-pin	RJ45/RJ45	5 m	Straight	441 - Stranded Shielded/2UTPx24AWG
U-09405	RJ45S RJ45S 441-10M	4-pin	RJ45/RJ45	10 m	Straight	441 - Stranded Shielded/2UTPx24AWG
U-04691	RJ45S RJ45S 441-15M	4-pin	RJ45/RJ45	15 m	Straight	441 - Stranded Shielded/2UTPx24AWG
U-04692	RJ45S RJ45S 441-20M	4-pin	RJ45/RJ45	20 m	Straight	441 - Stranded Shielded/2UTPx24AWG
U8636-05	RJ45S RJ45S 841-0.5M	8-pin	RJ45/RJ45	0.5 m	Straight	841 - Stranded Shielded/4UTPx24AWG
U8636-1	RJ45S RJ45S 841-1M	8-pin	RJ45/RJ45	1 m	Straight	841 - Stranded Shielded/4UTPx24AWG
U8636-2	RJ45S RJ45S 841-2M	8-pin	RJ45/RJ45	2 m	Straight	841 - Stranded Shielded/4UTPx24AWG
U8636-3	RJ45S RJ45S 841-3M	8-pin	RJ45/RJ45	3 m	Straight	841 - Stranded Shielded/4UTPx24AWG
U8636-5	RJ45S RJ45S 841-5M	8-pin	RJ45/RJ45	5 m	Straight	841 - Stranded Shielded/4UTPx24AWG
U8636-10	RJ45S RJ45S 841-10M	8-pin	RJ45/RJ45	10 m	Straight	841 - Stranded Shielded/4UTPx24AWG

Ethernet Connectivity Family

Ethernet Panel, Receptacles & Field Wireable Accessories



- Convert RJ45 to M12 to transition out of the panel
- 4 and 8-pin types
- Field wireables for both M12 and RJ45
- Receptacles for PCB applications

Material ID	Part Number	Pin Count	Termination Type	Mounting Style	Mounting Thread	Cable Grip Range
U2-32077	FKSD FKSD 44/M12	4-Pin	M12/M12	Feed-thru	PG9	NA
U2-21428	FKSDD RJ45SF 44/ST	4-Pin	M12/RJ45	Feed-thru	M16x1.5	NA
U3-00647	FKSDD RJ45SF 44	4-Pin	M12/RJ45	Feed-thru	M16x1.5	NA
U2-03887	CMBSD 8141-0/PG9	4-Pin	M12	Field wireable	NA	6-8 mm
U2-22253	RJ45 PANEL MOUNT W IP67 CAP	8-Pin	RJ45/RJ45	Feed-thru	M22	NA
U2-18467	CONNECTOR, FW,RJ45S 84 IDC	8-Pin	RJ45	Field wireable	NA	5.5-9 mm

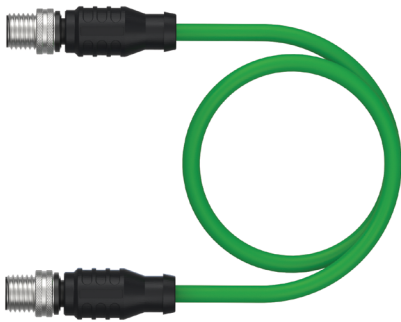


PROFINET Connectivity Family

PROFINET Straight Cordsets – Green TPE Jacket/Black Plug Body

Get real-time data exchange between devices with Turck's Focus+ selection of PROFINET double-ended cordsets. Choose from a variety of lengths in straight, stranded/shielded cables with 4-pin M12 connectors. These cordsets/cable assemblies have a flexible TPE jacket and are resistant to UV, chemicals and extreme temperatures. Ideal for high-speed data exchange. Custom cordset solutions are available upon request.

- 4-pin M12 connectors
- Overmolded design for reliability
- 1 – 15 meter cable lengths
- 22 AWG
- Rated IP67 for harsh environments



Material ID	Part Number	Pin Count	Termination Type	Cable Length	Orientation	Cable Type
U-38542	RSSD RSSD 423-1M	4-pin	M12/M12	1 m	Straight	423 - Stranded Shielded/2UTPx22AWG
U-45540	RSSD RSSD 423-2M	4-pin	M12/M12	2 m	Straight	423 - Stranded Shielded/2UTPx22AWG
U-50806	RSSD RSSD 423-3M	4-pin	M12/M12	3 m	Straight	423 - Stranded Shielded/2UTPx22AWG
U-50316	RSSD RSSD 423-5M	4-pin	M12/M12	5 m	Straight	423 - Stranded Shielded/2UTPx22AWG
U-53423	RSSD RSSD 423-10M	4-pin	M12/M12	10 m	Straight	423 - Stranded Shielded/2UTPx22AWG
U-56122	RSSD RSSD 423-15M	4-pin	M12/M12	15 m	Straight	423 - Stranded Shielded/2UTPx22AWG

Valve Plug Connectivity Family

Form A (18 mm) Connectors

In the Focus+ Program, Turck's valve plugs are Form A (18 mm connectors) designed for reliable performance for use in hydraulic and pneumatic solenoid valves. These components facilitate secure connections as pre-wired molded cordsets that reduce wiring errors and speed up system commissioning.

- Form "A" (18 mm) connectors
- Environmentally protected electrical junction for use with hydraulic and pneumatic solenoid valves
- Options for wiring with LED, MOV, or diode
- Gray PVC cable jacket, ITC type
- Rated for up to 220 V, 4A



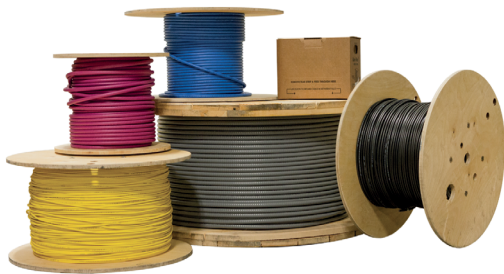
Material ID	Part Number	Pin Count	Wiring	Voltage	Cable Length	Cable Type
U1200-00	VAS 22-A653-5M	2 Conductors + 1 Ground, Contacts Parallel Wired	Straight	0-220 V	5 m	PVC/Gray, ITC
U1201-00	VAS 22-B653-5M	2 Conductors + 1 Ground, Ground Contacts Parallel Wired	LED	24-48 V	5 m	PVC/Gray, ITC
U1203-0	VAS 22-C653-5M	2 Conductors + 1 Ground, Ground Contacts Parallel Wired	LED	110-220 V	5 m	PVC/Gray, ITC
U1202-04	VAS 22-D653-5M	2 Conductors + 1 Ground, Ground Contacts Parallel Wired	LED/MOV	24-48 V	5 m	PVC/Gray, ITC
U1204-02	VAS 22-E653-5M	2 Conductors + 1 Ground, Ground Contacts Parallel Wired	LED/MOV	110-220 V	5 m	PVC/Gray, ITC
U7106-18	VAS 22-F653-5M	2 Conductors + 1 Ground, Ground Contacts Parallel Wired	LED/Diode	24-48 V	5 m	PVC/Gray, ITC
U1204-71	VAS 3-A580-5M	3 Conductors + Ground	Straight	0-220 V	5 m	PVC/Gray, ITC

Industrial Cable

Cut to Length Cable

Turck's most popular industrial cables are part of our Focus+ Program. Available in 30, 75, and 150 meters, you'll get more flexibility and minimize waste on a wide range of raw cable products. Turck's cut-to-length cable allows you to order specific lengths and a selection of jacket colors for different applications, making installation simpler. Wire gauge ranges from 18 – 26 AWG.

- Easier cable management and reduces costs
- Variety of jacket colors and gauges available
- Multiple certifications for application flexibility



Material ID	Part Number	# of Conductors	AWG	Jacket Material	Jacket Color	Type	Cable Length
200012894	RF50880-30M	3	18	PVC	Yellow	General	30 m
200012915	RF50880-75M	3	18	PVC	Yellow	General	75 m
200012924	RF50880-150M	3	18	PVC	Yellow	General	150 m
200012892	RF50642-30M	3	24	PVC	Yellow	General	30 m
200012913	RF50642-75M	3	24	PVC	Yellow	General	75 m
200012922	RF50642-150M	3	24	PVC	Yellow	General	150 m
200012900	RF50548-30M	4	18	PVC	Yellow	General	30 m
200012902	RF50548-75M	4	18	PVC	Yellow	General	75 m
200012904	RF50548-150M	4	18	PVC	Yellow	General	150 m
200012889	RF50530-30M	4	22	PVC	Yellow	General	30 m
200012910	RF50530-75M	4	22	PVC	Yellow	General	75 m
200012920	RF50530-150M	4	22	PVC	Yellow	General	150 m
200012896	RF50983-30M	4	22	PVC	Black	General	30 m
200012916	RF50983-75M	4	22	PVC	Black	General	75 m
200012926	RF50983-150M	4	22	PVC	Black	General	150 m
200012898	RF51211-30M	4	24	TPE	Teal	CAT5E	30 m
200012918	RF51211-75M	4	24	TPE	Teal	CAT5E	75 m
200012928	RF51211-150M	4	24	TPE	Teal	CAT5E	150 m
200012897	RF51210-30M	4	24	TPE	Teal	CAT5E	30 m
200012917	RF51210-75M	4	24	TPE	Teal	CAT5E	75 m
200012927	RF51210-150M	4	24	TPE	Teal	CAT5E	150 m

Continued on next page.

Industrial Cable

Cut to Length Cable (Continued)

Material ID	Part Number	# of Conductors	AWG	Jacket Material	Jacket Color	Type	Cable Length
200012893	RF50697-30M	4	26	PVC	Yellow	General	30 m
200012914	RF50697-75M	4	26	PVC	Yellow	General	75 m
200012923	RF50697-150M	4	26	PVC	Yellow	General	150 m
200012891	RF50549-30M	5	18	PVC	Yellow	General	30 m
200012912	RF50549-75M	5	18	PVC	Yellow	General	75 m
200012905	RF50549-150M	5	18	PVC	Yellow	General	150 m
200012890	RF50543-30M	5	22	PVC	Gray	General	30 m
200012911	RF50543-75M	5	22	PVC	Gray	General	75 m
200012921	RF50543-150M	5	22	PVC	Gray	General	150 m
200012895	RF50893-30M	8	24	TPE	Teal	CAT5E	30 m
200012903	RF50893-75M	8	24	TPE	Teal	CAT5E	75 m
200012925	RF50893-150M	8	24	TPE	Teal	CAT5E	150 m
200012901	RF52026-30M	8	26	TPE	Teal	CAT6A	30 m
200012919	RF52026-75M	8	26	TPE	Teal	CAT6A	75 m
200012929	RF52026-150M	8	26	TPE	Teal	CAT6A	150 m

Inductive Proximity Sensors Family

Miniature Sensors, 5 & 8 mm Barrel

Turck has a vast offering of miniature diameter sensors to fit into the smallest areas, providing reliable detection of small metal targets. We've chosen some of our most popular small threaded barrel options for the Focus+ Program. These devices are meant to work in harsh industrial applications and are easily connectable with integral M8 or M12 connections.

- 1 mm – 4 mm sensing distance, depending on variant
- Embeddable and non-embeddable versions
- Wide operating temperature range
- Stainless Steel barrels



Material ID	Part Number	Body Style	Sensing Range	Operating Voltage	Output	Operating Temperature Range	Special Features
4608640	BI1-EG05-AP6X-V1331	5 mm Barrel	1 mm	10-30 VDC	3 wire DC, PNP	-25...+70 °C	Embeddable
4602220	BI1.5-EG08-AP6X-V1131	8 mm Barrel	1.5 mm	10-30 VDC	3 wire DC, PNP	-25...+70 °C	Embeddable
4602150	BI2-EG08-AN6X-V1131	8 mm Barrel	2 mm	10-30 VDC	3 wire DC, NPN	-25...+70 °C	Embeddable
4602060	BI2-EG08-AP6X-H1341	8 mm Barrel	2 mm	10-30 VDC	3 wire DC, PNP	-25...+70 °C	Embeddable
4602050	BI2-EG08-AP6X-V1131	8 mm Barrel	2 mm	10-30 VDC	3 wire DC, PNP	-25...+70 °C	Embeddable
4669460	BI2-EG08K-AP6X-H1341	8 mm Barrel	2 mm	10-30 VDC	3 wire DC, PNP	-25...+70 °C	Embeddable, Short barrel
4669450	BI2-EG08K-AP6X-V1131	8 mm Barrel	2 mm	10-30 VDC	3 wire DC, PNP	-25...+70 °C	Embeddable, Short barrel
4602034	BI2U-EG08-AP6X-H1341	8 mm Barrel	2 mm	10-30 VDC	3 wire DC, PNP	-30...+85 °C	Uprox, Embeddable
4602033	BI2U-EG08-AP6X-V1131	8 mm Barrel	2 mm	10-30 VDC	3 wire DC, PNP	-30...+85 °C	Uprox, Embeddable
4602850	NI3-EG08-AN6X-V1131	8 mm Barrel	3 mm	10-30 VDC	3 wire DC, NPN	-25...+70 °C	Non-embeddable
4602760	NI3-EG08-AP6X-H1341	8 mm Barrel	3 mm	10-30 VDC	3 wire DC, PNP	-25...+70 °C	Non-embeddable
4602750	NI3-EG08-AP6X-V1131	8 mm Barrel	3 mm	10-30 VDC	3 wire DC, PNP	-25...+70 °C	Non-embeddable
4600640	NI4U-EG08-AP6X-H1341	8 mm Barrel	4 mm	10-30 VDC	3 wire DC, PNP	-30...+85 °C	Uprox, Non-embeddable
4600620	NI4U-EG08-AP6X-V1131	8 mm Barrel	4 mm	10-30 VDC	3 wire DC, PNP	-30...+85 °C	Uprox, Non-embeddable

Inductive Proximity Sensors Family

Inductive Sensors, 12 mm Barrel

Turck's Focus+ inductive proximity sensors come in a range of popular sizes, including our compact 12 mm barrel for short sensing distances. These rugged sensors are designed to detect metal targets in a range of applications for non-contact monitoring of metal flaps on machines, metal valve positioning, detect if metal parts are in place and much more. They are ideally suited for harsh environments and many have high IP ratings.

- 2 mm – 10 mm sensing distance, depending on variant
- Embeddable and non-embeddable versions
- Wide operating temperature range
- Variants with IO-Link
- Washdown versions available



Material ID	Part Number	Body Style	Sensing Range	Operating Voltage	Output	Operating Temperature Range	Special Features
46065	BI2-M12-AP6X-H1141	12 mm Barrel	2 mm	10-30 VDC	3 wire DC, PNP	-25...+70 °C	Embeddable
46066	BI2-M12-AN6X-H1141	12 mm Barrel	2 mm	10-30 VDC	3 wire DC, NPN	-25...+70 °C	Embeddable
4405041	BI3-M12-AD4X-H1141	12 mm Barrel	3 mm	10-65 VDC	2 wire DC, PNP	-25...+70 °C	Embeddable
1634140	BI3U-M12-AP6X-H1141	12mm Barrel	3 mm	10-30 VDC	3 wire DC, PNP	-30...+85 °C	Uprox, Embeddable
46070	BI4-M12-AP6X-H1141	12 mm Barrel	4 mm	10-30 VDC	3 wire DC, PNP	-25...+70 °C	Embeddable
46072	BI4-M12K-AP6X-H1141	12 mm Barrel	4 mm	10-30 VDC	3 wire DC, PNP	-25...+70 °C	Embeddable, Short Barrel
46071	BI4-M12-AN6X-H1141	12 mm Barrel	4 mm	10-30 VDC	3 wire DC, NPN	-25...+70 °C	Embeddable
1633200	BI4-M12-VP6X-H1141	12 mm Barrel	4 mm	10-30 VDC	4 wire DC, PNP, NO/NC	-25...+70 °C	Embeddable
1634804	BI4U-M12-AP6X-H1141	12 mm Barrel	4 mm	10-30 VDC	3 wire DC, PNP	-30...+85 °C	Uprox, Embeddable
1634824	BI4U-M12-AN6X-H1141	12 mm Barrel	4 mm	10-30 VDC	3 wire DC, NPN	-30...+85 °C	Uprox, Embeddable
1634812	BI4U-EM12WD-AP6X-H1141	12 mm Barrel	4 mm	10-30 VDC	3 wire DC, NPN	-40...+100 °C	Uprox, Wash Down, Embeddable
100015372	BI4U-EM12WD-IOL6X2-H1141	12 mm Barrel	4 mm	10-30 VDC	4 wire DC, PNP/NPN, NO/NC	-40...+100 °C	Uprox, IO-Link, Wash Down, Embeddable
1644810	BI6U-M12-AP6X-H1141	12 mm Barrel	6 mm	10-30 VDC	3 wire DC, PNP	-25...+70 °C	Uprox, Embeddable
4614706	BI6-EG12FE-AP6X-H1141	12 mm Barrel	6 mm	10-30 VDC	3 wire DC, PNP	-25...+70 °C	Embeddable, Stainless front
46067	NI4-M12-AP6X-H1141	12 mm Barrel	4 mm	10-30 VDC	3 wire DC, PNP	-25...+70 °C	Non-embeddable
46068	NI4-M12-AN6X-H1141	12 mm Barrel	4 mm	10-30 VDC	3 wire DC, NPN	-25...+70 °C	Non-embeddable
4611310	NI8-M12-AP6X-H1141	12 mm Barrel	8 mm	10-30 VDC	3 wire DC, PNP	-25...+70 °C	Non-embeddable
1644140	NI8U-M12-AP6X-H1141	12 mm Barrel	8 mm	10-30 VDC	3 wire DC, PNP	-30...+85 °C	Uprox, Non-embeddable
1634806	NI10U-M12-AP6X-H1141	12 mm Barrel	10 mm	10-30 VDC	3 wire DC, PNP	-30...+85 °C	Uprox, Non-embeddable

Inductive Proximity Sensors Family

Inductive Sensors, 18 mm Barrel

Turck's Focus+ Program includes our 18 mm diameter inductive proximity sensors in a chrome-plated brass threaded barrel housing. Ideal for detecting metal targets, inductive sensors from Turck are built to last even in the harsh environments found in heavy industrial plants and factories. Get improved sensing performance and a long service life with these popular sensors.

- 5 mm – 15 mm sensing distance, depending on variant
- Embeddable and non-embeddable versions
- Wide operating temperature range
- Variant with IO-Link
- Washdown versions available



Material ID	Part Number	Body style	Sensing Range	Operating Voltage	Output	Operating Temperature Range	Special Features
46145	BI5-M18-AP6X-H1141	18 mm Barrel	5 mm	10-30 VDC	3 wire DC, PNP	-25...+70 °C	Embeddable
46146	BI5-M18-AN6X-H1141	18 mm Barrel	5 mm	10-30 VDC	3 wire DC, NPN	-25...+70 °C	Embeddable
1635140	BI5U-M18-AP6X-H1141	18 mm Barrel	5 mm	10-30 VDC	3 wire DC, PNP	-30...+85 °C	Uprox, Embeddable
4414541	BI7-M18-AD4X-H1141	18 mm Barrel	7 mm	10-65 VDC	2 wire DC, PNP	-25...+70 °C	Embeddable
46150	BI8-M18-AP6X-H1141	18 mm Barrel	8 mm	10-30 VDC	3 wire DC, PNP	-25...+70 °C	Embeddable
4615100	BI8-M18-AN6X-H1141	18 mm Barrel	8 mm	10-30 VDC	3 wire DC, NPN	-25...+70 °C	Embeddable
1644731	BI8U-M18-AP6X-H1141	18 mm Barrel	8 mm	10-30 VDC	3 wire DC, PNP	-30...+85 °C	Embeddable
1634816	BI8U-EM18WD-AP6X-H1141	18 mm Barrel	8 mm	10-30 VDC	3 wire DC, PNP	-40...+100 °C	Uprox, Wash Down, Embeddable
100006589	BI8U-EM18WD-IOL6X2-H1141	18 mm Barrel	8 mm	10-30 VDC	4 wire DC, PNP/NPN, NO/NC	-40...+100 °C	Uprox, IO-Link, Wash Down
1644830	BI10U-M18-AP6X-H1141	18 mm Barrel	10 mm	10-30 VDC	3 wire DC, PNP	-25...+70 °C	Uprox, Embeddable
46147	NI8-M18-AP6X-H1141	18 mm Barrel	8 mm	10-30 VDC	3 wire DC, PNP	-25...+70 °C	Non-embeddable
1645140	NI12U-M18-AP6X-H1141	18 mm Barrel	12 mm	10-30 VDC	3 wire DC, PNP	-30...+85 °C	Uprox, Non-embeddable
4611400	NI14-M18-AP6X-H1141	18 mm Barrel	14 mm	10-30 VDC	3 wire DC, PNP	-25...+70 °C	Non-embeddable
1635331	NI15U-M18-AP6X-H1141	18 mm Barrel	15 mm	10-30 VDC	3 wire DC, PNP	-30...+85 °C	Uprox, Non-embeddable

Inductive Proximity Sensors Family

Inductive Sensors, 30 mm Barrel

For proximity detection applications that need an extended sensing range, our 30 mm diameter inductive sensors provide 10 – 30 mm of range. Choose from five different 30 mm sensors in this family as part of our Focus+ Program. These sensors are ideal for detecting metal targets were the sensor needs to be installed further away such as in packaging, warehouses or monitoring machine parts.

- 10 mm – 30 mm sensing distance, depending on variant
- Embeddable and non-embeddable versions
- Wide operating temperature range
- Variant with IO-Link
- Washdown versions available



Material ID	Part Number	Body style	Sensing Range	Operating Voltage	Output	Operating Temperature Range	Special Features
46175	BI10-M30-AP6X-H1141	30 mm Barrel	10 mm	10-30 VDC	3 wire DC, PNP	-25...+70 °C	Embeddable
4617511	BI10-M30E-AP6X-H1141	30 mm Barrel	10 mm	10-30 VDC	3 wire DC, PNP	-25...+70 °C	Embeddable
46185	BI15-M30-AP6X-H1141	30 mm Barrel	15 mm	10-30 VDC	3 wire DC, PNP	-25...+70 °C	Embeddable
4618600	BI15-M30-AN6X-H1141	30 mm Barrel	15 mm	10-30 VDC	3 wire DC, NPN	-25...+70 °C	Embeddable
1636732	BI15U-M30-AP6X-H1141	30 mm Barrel	15 mm	10-30 VDC	3 wire DC, PNP	-30...+85 °C	Uprox, Embeddable
100000266	BI15U-EM30WD-IOL6X2-H1141	30 mm Barrel	15 mm	10-30 VDC	4 wire DC, PNP/NPN, NO/NC	-40...+100 °C	Uprox, IO-Link, Wash Down, Embeddable
4670510	NI20-M30-AP6X-H1141	30 mm Barrel	20 mm	10-30 VDC	3 wire DC, PNP	-25...+70 °C	Non-embeddable
1646631	NI30U-M30-AP6X-H1141	30 mm Barrel	30 mm	10-30 VDC	3 wire DC, PNP	-30...+85 °C	Uprox, Non-embeddable

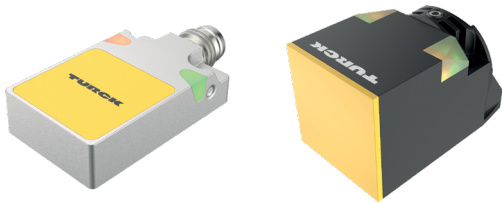


Inductive Proximity Sensors Family

Inductive Sensors, Rectangular

When a rectangular form-factor or longer range is needed, Turck's Focus+ Program includes a selection of inductive proximity sensors to fit those longer-distance applications such as on conveyors or in welding applications where the sensor needs to be installed at a greater distance or to monitor a wider area. Inductive sensors from Turck are built to last even in the harsh environments found in heavy industrial plants and factories, ensuring a long service life.

- 2 mm – 75 mm sensing distance, depending on variant
- Embeddable and non-embeddable versions
- Wide operating temperature range



Material ID	Part Number	Body Style	Sensing Range	Operating Voltage	Output	Operating Temperature Range	Special Features
1609390	BI2-Q10S-AP6X-0.2-RS4T	27.8 x 16 x 10.2 mm, Rectangular	2 mm	10-30 VDC	3 wire DC, PNP	-25...+70 °C	Embeddable
1614005	BI2-Q4.7-AP6X-0.3-PSG3M	16 x 8 x 4.7 mm, Rectangular	2 mm	10-30 VDC	3 wire DC, PNP	0...+85 °C	Embeddable
1613000	BI2-Q5.5-AP6X	28 x 8 x 5.5 mm, Rectangular	2 mm	10-30 VDC	3 wire DC, PNP	-25...+70 °C	Embeddable
1613099	BI2-Q5.5-AP6X-0.2-PSG3M	28 x 8 x 5.5 mm, Rectangular	2 mm	10-30 VDC	3 wire DC, PNP	-25...+70 °C	Embeddable
1613094	BI2-Q5.5-AP6X-0.2-RS4T	28 x 8 x 5.5 mm, Rectangular	2 mm	10-30 VDC	3 wire DC, PNP	-25...+70 °C	Embeddable
1601602	BI7-Q08-AP6X2-V1131	32 x 20 x 8 mm, Rectangular	7 mm	10-30 VDC	3 wire DC, PNP	-25...+70 °C	Embeddable
1601683	BI7-Q08-AP6X2-0.2-RS4T	32 x 20 x 8 mm, Rectangular	7 mm	10-30 VDC	3 wire DC, PNP	-25...+70 °C	Embeddable
4256220	BI10-Q14-ADZ32X2	52 x 30 x 14 mm, Rectangular	10 mm	20-250 VAC, 10-300 VDC	2 wire AC/DC	-25...+70 °C	Embeddable
1625090	BI15-CK40-AP6X2-H1141 W/BS2.1	65 x 40 x 40 mm, Rectangular	15 mm	10-30 VDC	3 wire DC, PNP	-25...+70 °C	Embeddable
1625689	BI15U-CK40-AP6X2-H1141 W/BS2.1	65 x 40 x 40 mm, Rectangular	15 mm	10-30 VDC	3 wire DC, PNP	-30...+85 °C	Uprox, Embeddable
13410	BI15-CP40-FZ3X2/S10	114 mm x 40mm x 40 mm, Rectangular	15 mm	20-250 VAC, 10-300 VDC	4 wire AC/DC	-25...+70 °C	Terminal Chamber, 1/2-14 NPT Threads, Embeddable
1625800	NI35U-CK40-AP6X2-H1141	65 x 40 x 40 mm, Rectangular	35 mm	10-30 VDC	3 wire DC, PNP	-25...+70 °C	Uprox, Non-embeddable
1608940	BI50U-Q80-AP6X2-H1141	92 x 80 x 40 mm, Rectangular	50 mm	10-30 VDC	3 wire DC, PNP	-25...+70 °C	Uprox, Embeddable
1625868	NI50U-CK40-AP6X2-H1141 W/BS4	65 x 40 x 40 mm, Rectangular	50 mm	10-30 VDC	3 wire DC, PNP	-30...+85 °C	Uprox, Non-embeddable
1625857	NI75U-Q80-VP4X2-H1141	92 x 80 x 40 mm, Rectangular	75 mm	10-65 VDC	4 wire DC, PNP	-25...+70 °C	Uprox, Non-embeddable
1623805	NI75U-CP80-AP6X2-H1141	80 x 80 x 41 mm, Rectangular	75 mm	10-30 VDC	3 wire DC, PNP	-30...+85 °C	Uprox, Non-embeddable

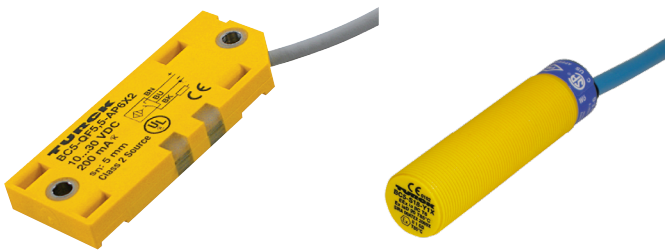
Capacitive Sensors Family

Barrel and Rectangular Housing

Capacitive sensors offer a low-cost presence detection solution for metallic and non-metallic objects alike.

Available in both rectangular and cylindrical form factors, Capacitive sensors offer non-contact detection of both liquids and solids in bulk material handling and level detection applications.

- Sensing ranges from 3 - 10mm
- Small form factor
- Custom electrical connectors available upon request.
- Non-contact presence detection



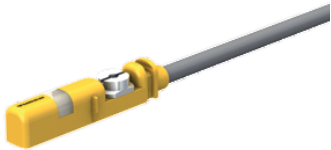
Material ID	Part Number	Body Style	Sensing Range	Operating Voltage	Output	Operating Temperature Range	Special Features
2601091	BC3-M12-AP6X2-0.2-RS4T	12 mm Metal Barrel	3 mm	10 - 30 VDC	Normally Open PNP	-25 - 70 °C	M12 connector
2620121	BC10-QF5.5-AN6X2	5.5 mm Tall Rectangular	10 mm	10 - 30 VDC	Normally Open NPN	-25 - 70 °C	-
2620137	BC10-QF5.5-AN6X2/S932	5.5 mm Tall Rectangular	10 mm	10 - 30 VDC	Normally Open NPN	-25 - 70 °C	Without metal insert
2620117	BC10-QF5.5-AP6X2	5.5 mm Tall Rectangular	10 mm	10 - 30 VDC	Normally Open PNP	-25 - 70 °C	-
2620109	BC10-QF5.5-AP6X2/S932	5.5 mm Tall Rectangular	10 mm	10 - 30 VDC	Normally Open PNP	-25 - 70 °C	Without metal insert
2620197	BC10-QF5.5-AP6X2-0.2-RS4T	5.5 mm Tall Rectangular	10 mm	10 - 30 VDC	Normally Open PNP	-25 - 70 °C	M12 connector
2620194	BC10-QF5.5-AP6X2-0.2-RS4T/S250	5.5 mm Tall Rectangular	10 mm	10 - 30 VDC	Normally Open PNP	-25 - 70 °C	Non-adjustable sensitivity
2620128	BC10-QF5.5-RN6X2	5.5 mm Tall Rectangular	10 mm	10 - 30 VDC	Normally Closed NPN	-25 - 70 °C	Normally Closed output
26201	BC5-Q08-AN6X2/S250	8 mm Tall Rectangular	5 mm	10 - 30 VDC	Normally Open NPN	-25 - 70 °C	Non-adjustable sensitivity
26200	BC5-Q08-AP6X2/S250	8 mm Tall Rectangular	5 mm	10 - 30 VDC	Normally Open PNP	-25 - 70 °C	Non-adjustable sensitivity
20060	BC5-S18-Y1X	18 mm Plastic Barrel	5 mm	Nom. 8.2 VDC	2-wire, NAMUR	-25 - 70 °C	NAMUR output
2006007	BC5-S18-Y1X 7M	18 mm Plastic Barrel	5 mm	Nom. 8.2 VDC	2-wire, NAMUR	-25 - 70 °C	NAMUR output

Magnetic Field Sensors Family

Cylinder Position Sensors

Turck's magneto-resistive cylinder position sensors are used for detecting magnetic equipped pistons on pneumatic and other types of cylinders. These compact, non-contact sensors can determine the position of the cylinder piston without diminishing the integrity of the cylinder itself. Each sensor housing is designed to easily mount directly into the extruded T and C grooves on the cylinder housings or added to round or tie rod cylinder profiles with common brackets.

- Compact design
- Quick and easy mounting
- Excellent EMI shielding properties, high IP rating
- Reliable and repeatable switch points
- Wide operating temperature range



Material ID	Part Number	Body Style	Pass Speed	Operating Voltage	Output	Operating Temperature Range	Cylinder Profile Fit
4685844	BIM-UNR-AP6X-0.3-PSG3M W/M	18 x 2.9 x 4.6 mm	≤ 3 m/s	10-30 VDC	3 wire DC, PNP	-25...+70 °C	C-groove, Round
4685723	BIM-UNT-AP6X-0.3-PSG3M	28 x 5 x 6 mm	≤ 10 m/s	10-30 VDC	3 wire DC, PNP	-25...+70 °C	T-groove, Round, Tie rod
46857260	BIM-UNT-AP6X-0.3-RS4T	28 x 5 x 6 mm	≤ 10 m/s	10-30 VDC	3 wire DC, PNP	-25...+70 °C	T-groove, Round, Tie rod
4621690	BIM-IKE-AP6X-H1.141 W/KLJ3	30 x 14.6 x 28 mm	≤ 10 m/s	10-30 VDC	3 wire DC, PNP	-25...+70 °C	Round, Tie rod

Condition Monitoring Sensors Family

Vibration, Temperature, Humidity Options

Turck's CMVT and CMTH sensors are rugged solutions for condition monitoring. The CMVT measures vibration and temperature, while the CMTH measures humidity and temperature. Both sensors feature an IO-Link interface for seamless integration into modern, networked automation systems. They are suitable for both new equipment and retrofitting existing machines without complex PLC integration.

- Vibration + temperature or humidity + temperature
- IO-Link output
- Wide temperature range



Material ID	Part Number	Body Style	Range	Operating Voltage	Output	Operating Temperature Range	Special Features
100016543	CMVT-QR20-IOLX3-H1141	QR20, Rectangular	-16 g to +16 g	18 - 30 VDC	IO-Link	-40 to +85 °C	-
100029966	CMVT-QR20-IOLX3-0.3-RS4	QR20, Rectangular	-16 g to +16 g	18 - 30 VDC	IO-Link	-40 to +85 °C	-
100016580	CMTH-M12-IOL6X2-H1141	12 mm Barrel	-40 to +100 °C	18 - 30 VDC	IO-Link, Switch	-40 - 100 °C	Dew point calculation

Flow Sensors Family

Air and Liquid Sensing Insertion Style Flow Sensors

Flow sensors from Turck offer a reliable way to verify the presence or absence of flow. Based on the Calorimetric principle, these sensors register heat loss at the probe tip to determine whether or not a specific and repeatable threshold of flow is present.

- Liquid and air monitoring available
- Highly repeatable performance
- Potentiometer adjusted switching threshold



Material ID	Part Number	Body Style	Sensing Range	Operating Voltage	Output	Operating Temperature Range	Special Features
6870704	FCS-M18-AP8X	18 mm Barrel, Insertion	0.5...15 m/s Air	24 VDC	Normally Open PNP	-20...+70 °C	Air flow sensing
6871004	FCS-N1/2A4-AP8X-H1141	Probe, Insertion	1...150 cm/s Water 3...300 cm/s Oil	24 VDC	Normally Open PNP	-20...+80 °C	Stainless steel housing
6871032	FCS-N1/2A4P-AP8X-H1141	Probe, Insertion	1...150 cm/s Water 3...300 cm/s Oil	24 VDC	Normally Open PNP	-20...+80 °C	-

Inclinometers Family

Angular Sensor, QR20 Housing

Many of Turck's inclinometers are included in the Focus+ Program. They offer high accuracy in a rugged housing with ingress protection up to IP69K. Variants include inclinometers that use an innovative sensor fusion principle, combining Micro-Electro-Mechanical Systems (MEMS) acceleration measurement with gyroscope technology. This allows the devices to effectively filter out shock and vibration that could distort conventional sensors, ensuring fast and precise measurement even on moving machines. Both IO-Link and analog output versions are available.

- Single axis or dual axis measurement
- IO-Link and analog output
- Wide temperature range
- MEMS or MEMS + GYRO technology



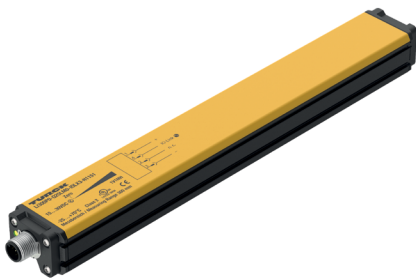
Material ID	Part Number	Body Style	Sensing Range	Operating Voltage	Output	Operating Temperature Range	Special Features
100020900	B1NF360V-QR20-IOLX3-H1141	QR20	0 - 360°	18 - 30 VDC	IO-Link	-40 to +85 °C	Single Axis - Fusion Technology
100020901	B2NF85H-QR20-IOLX3-H1141	QR20	-85 to +85°	18 - 30 VDC	IO-Link	-40 to +85 °C	Dual Axis - Fusion Technology
100025084	B1N360V-QR20-IOLX3-H1141	QR20	0 - 360°	18 - 30 VDC	IO-Link	-40 to +85 °C	Single Axis
100025086	B2N85H-QR20-IOLX3-H1141	QR20	-85 to +85°	18 - 30 VDC	IO-Link	-40 to +85 °C	Dual Axis
100030753	B1N360V-QR20-2LI2X3-H1151	QR20	0 - 360°	18 - 30 VDC	Programmable Analog - 4-20 mA Default	-40 to +85 °C	Single Axis
100030754	B1NF360V-QR20-2LI2X3-H1151	QR20	0 - 360°	18 - 30 VDC	Programmable Analog - 4-20 mA Default	-40 to +85 °C	Single Axis - Fusion Technology
100031451	B2N10H-QR20-2LI2X3-H1151	QR20	-10 to +10°	18 - 30 VDC	Programmable Analog - 4-20 mA Default	-40 to +85 °C	Dual Axis
100031452	B2N25H-QR20-2LI2X3-H1151	QR20	-25 to +25°	18 - 30 VDC	Programmable Analog - 4-20 mA Default	-40 to +85 °C	Dual Axis
100031453	B2N45H-QR20-2LI2X3-H1151	QR20	-45 to +45°	18 - 30 VDC	Programmable Analog - 4-20 mA Default	-40 to +85 °C	Dual Axis
100031454	B2N60H-QR20-2LI2X3-H1151	QR20	-60 to +60°	18 - 30 VDC	Programmable Analog - 4-20 mA Default	-40 to +85 °C	Dual Axis
100031455	B2N85H-QR20-2LI2X3-H1151	QR20	-85 to +85°	18 - 30 VDC	Programmable Analog - 4-20 mA Default	-40 to +85 °C	Dual Axis
100031515	B2NF10H-QR20-2LI2X3-H1151	QR20	-10 to +10°	18 - 30 VDC	Programmable Analog - 4-20 mA Default	-40 to +85 °C	Dual Axis - Fusion Technology
100031516	B2NF25H-QR20-2LI2X3-H1151	QR20	-25 to +25°	18 - 30 VDC	Programmable Analog - 4-20 mA Default	-40 to +85 °C	Dual Axis - Fusion Technology
100031517	B2NF45H-QR20-2LI2X3-H1151	QR20	-45 to +45°	18 - 30 VDC	Programmable Analog - 4-20 mA Default	-40 to +85 °C	Dual Axis - Fusion Technology
100031518	B2NF60H-QR20-2LI2X3-H1151	QR20	-60 to +60°	18 - 30 VDC	Programmable Analog - 4-20 mA Default	-40 to +85 °C	Dual Axis - Fusion Technology
100031519	B2NF85H-QR20-2LI2X3-H1151	QR20	-85 to +85°	18 - 30 VDC	Programmable Analog - 4-20 mA Default	-40 to +85 °C	Dual Axis - Fusion Technology
100026933	B1N360V-QR20-2UPN6X3-H1141	QR20	0 - 360°	18 - 30 VDC	Programmable Discrete	-40 to +85 °C	Single Axis

Linear Sensors Family

Inductive, Non-contact Linear Sensors

Key advantages of Turck's linear sensors include wear-free measurement which provides high accuracy, repeatability and a long service life, especially in harsh conditions. Multiple measuring lengths are included as part of the Focus+ Program along with accessories. Non-contact technology eliminates wear, ensuring long-term accuracy and reliability, making them ideal for hydraulic cylinders and presses. Small blind zones allow for smaller overall system footprints. Programmable measuring ranges, status LEDs and integrated error diagnostics help simplify commissioning and maintenance.

- Multiple measuring lengths
- IO-Link and analog output
- Non-contact measuring technology



Material ID	Part Number	Body Style	Sensing Range	Operating Voltage	Output	Operating Temperature Range
100012822	LI100P0-Q25LM0-IOLX3-H1141	Q25	0 - 100 mm	15 - 30 VDC	IO-Link	-25 to +70 °C
100012823	LI200P0-Q25LM0-IOLX3-H1141	Q25	0 - 200 mm	15 - 30 VDC	IO-Link	-25 to +70 °C
100012825	LI300P0-Q25LM0-IOLX3-H1141	Q25	0 - 300 mm	15 - 30 VDC	IO-Link	-25 to +70 °C
100012829	LI600P0-Q25LM0-IOLX3-H1141	Q25	0 - 600 mm	15 - 30 VDC	IO-Link	-25 to +70 °C
100001932	LI100P0-Q25LM0-ELIU5X3-H1151	Q25	0 - 100 mm	15 - 30 VDC	0-10V/4-20 mA	-25 to +70 °C
100001933	LI200P0-Q25LM0-ELIU5X3-H1151	Q25	0 - 200 mm	15 - 30 VDC	0-10V/4-20 mA	-25 to +70 °C
100001934	LI300P0-Q25LM0-ELIU5X3-H1151	Q25	0 - 300 mm	15 - 30 VDC	0-10V/4-20 mA	-25 to +70 °C
100001935	LI400P0-Q25LM0-ELIU5X3-H1151	Q25	0 - 400 mm	15 - 30 VDC	0-10V/4-20 mA	-25 to +70 °C
100001936	LI500P0-Q25LM0-ELIU5X3-H1151	Q25	0 - 500 mm	15 - 30 VDC	0-10V/4-20 mA	-25 to +70 °C

Accessories

Material ID	Part Number	Body Style
6901045	M1-Q25L (2 PCS)	Q25
6901041	P1-LI-Q25L	Q25
6901042	P2-LI-Q25L	Q25
6901044	P3-LI-Q25L	Q25

Pressure Sensors Family

Rotatable, Non-rotatable Sensor Options

Turck's Focus+ pressure sensor offering includes both programmable and non-programmable options. Designed with a rugged stainless steel housing, these sensors will perform in the most demanding applications.

- Stainless-steel measuring cell
- 1/4" NPT process connection
- 0.25% full scale accuracy



Material ID	Part Number	Body Style	Sensing Range	Operating Voltage	Output	Operating Temperature Range	Special Features
100001528	PS510-10V-03-LI2UPN8-H1141	Rotatable	-1 - 10 Bar	18 - 33 VDC	Switching / Analog - Programmable	-40 - 80 °C	IO-Link
100001539	PS510-16V-03-LI2UPN8-H1141	Rotatable	-1 - 16 Bar	18 - 33 VDC	Switching / Analog - Programmable	-40 - 80 °C	IO-Link
6836914	PT100PSIG-2003-I2-H1143	Non-Rotatable	0 - 100 PSIG	7 - 33 VDC	4 - 20 mA	-40 - 85 °C	-
100001276	PT150PSIG-2003-I2-H1143	Non-Rotatable	0 - 150 PSIG	7 - 33 VDC	4 - 20 mA	-40 - 85 °C	-
6836986	PT200PSIG-2003-I2-H1143	Non-Rotatable	0 - 200 PSIG	7 - 33 VDC	4 - 20 mA	-40 - 85 °C	-

Distance Radar Sensor

Non-contact Presence Detection

Turck's highly configurable distance radar sensor offers accurate and reliable presence detection at distances of up to 15 meters. Outdoor applications are unaffected by wind, rain, or fog allowing even the most demanding applications to be solved with ease.

- Radar monitor software to facilitate commissioning
- Sensor can be programmed to ignore non-essential targets or obstructions
- 15 ° cone angle



Material ID	Part Number	Body Style	Sensing Range	Operating Voltage	Output	Operating Temperature Range	Special Features
100030148	DR15S-M30E-IOL8X2-H1141	30 mm Barrel	.35 - 15 m	18 - 33 VDC (IO-Link enabled) 10 - 33 VDC (SIO mode)	IO-Link, Switching, and Analog	-25 - 65 °C	-

Rotary Encoders

Position, Direction and Speed Detection

Built for harsh industrial environments, these products combine a sturdy double-bearing lock design for high resistance to shock, vibration, and alignment issues with a fully protected housing. Die-cast enclosures, shaft seals plus stainless-steel hubs, aluminum flanges and disc tables deliver robust environmental protection up to IP67.

- 1024 pulses per revolution
- Push-pull HTL differential quadrature output
- Wide operating temperature range
- Various housing sizes



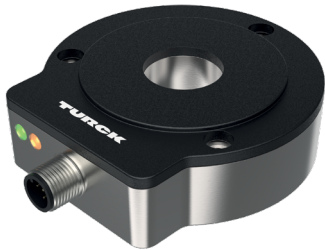
Material ID	Part Number	Body Style	Operating Voltage	Output	Operating Temperature Range
1545512	RI-12HA3S1-2K1024-H1181	RI-12	5-30 VDC	Push-Pull	-40 to +85 °C
1546487	RI-43HA6E2-2F1024-H1181/N42	RI-43	5-30 VDC	Push-Pull	-40 to +80 °C

Rotary Inductive Position Sensors Family

QR14 & QR24, Non-contact Rotary Sensors

Turck's rugged QR24 and compact QR14 rotary sensors use a contactless inductive measuring principle to deliver wear-free detection over a full 360° range. Both types are included in the Focus+ Program and offer high IP ratings for rugged environments. The QR24, with its larger, fully potted housing and separate positioning element, is designed as an alternative to traditional hollow-shaft encoders, offering high immunity to shock, vibration and contamination. The miniature QR14 series provides the same non-contact, maintenance-free operation in a much smaller rectangular form factor, with multiple mounting options and washdown-capable housings, making it well suited for space-constrained applications where high ingress protection is needed.

- Full 0 - 360° measuring range
- Analog, incremental and SSI outputs
- IO-Link versions available
- Standard or stainless-steel housings
- Accessories also available



Material ID	Part Number	Body Style	Sensing Range	Operating Voltage	Output	Operating Temperature Range	Special Features
1590853	RI360P1-QR14-ELIU5X2	QR14	0 - 360°	15 - 30 VDC	0-10V/4-20 mA	-25 to +70 °C	-
1590854	RI360P1-QR14-ELIU5X2-0.3-RS5	QR14	0 - 360°	15 - 30 VDC	0-10V/4-20 mA	-25 to +70 °C	-
1590857	RI360P2-QR14-ELIU5X2	QR14	0 - 360°	15 - 30 VDC	0-10V/4-20 mA	-25 to +70 °C	-
1590859	RI360P2-QR14-ELIU5X2-0.3-RS5	QR14	0 - 360°	15 - 30 VDC	0-10V/4-20 mA	-25 to +70 °C	-
1590905	RI360P0-QR24M0-HES-G25X3-H1181	QR24	0 - 360°	15 - 30 VDC	SSI, Gray-coded	-25 to +85 °C	-
1590910	RI360P0-QR24M0-INCRX2-H1181	QR24	0 - 360°	10 - 30 VDC	Push-Pull	-25 to +85 °C	-
1590912	RI360P0-EQR24M0-INCRX2-H1181	QR24	0 - 360°	10 - 30 VDC	Push-Pull	-25 to +85 °C	Stainless Steel
1590975	RI360P0-QR24M0-IOLX2-H1141	QR24	0 - 360°	15 - 30 VDC	IO-Link	-25 to +85 °C	-
1590977	RI360P0-EQR24M0-ELIU5X2-H1151	QR24	0 - 360°	15 - 30 VDC	0-10V/4-20 mA	-25 to +85 °C	Stainless Steel
1590978	RI360P0-EQR24M0-IOLX2-H1141	QR24	0 - 360°	15 - 30 VDC	IO-Link	-25 to +85 °C	Stainless Steel
100029756	RI360P0-QR24M0-ELIU5X-2LD-H1151	QR24	0 - 360°	10 - 30 VDC	0-10V/4-20 mA	-40 to +85 °C	-

Rotary Inductive Position Sensors Family

Accessories

Material ID	Part Number	Description	Size	Body Style
1590819	P2-RI-QR14	Position Element	Ø 1/4" shaft Plastic PC-GF20	QR14
1590920	M1-QR24	Mounting Ring	Ø 74 mm AL	QR24
1590965	M5-QR24	Mounting Ring	Ø 74 mm Plastic PA6	QR24
1590921	P1-RI-QR24	Position Element	Ø 20 mm shaft AL/plastic	QR24
1590926	P6-RI-QR24	Position Element	Ø 3/8" shaft AL	QR24
1590927	P7-RI-QR24	Position Element	Ø 1/4" shaft AL	QR24
1590966	PE1-EQR24	Position Element	Base unit for postioning element-No bushing - for SS bushings	QR24
1593012	P9-RI-QR24	Position Element	Ø 1/2" shaft AL	QR24
1593013	P10-RI-QR24	Position Element	Ø 5/8" shaft AL	QR24
1593014	P11-RI-QR24	Position Element	Ø 3/4" shaft AL	QR24
1590928	RA1-QR24	Reducing Bushing	Ø 20 mm AL	QR24
1590930	RA3-QR24	Reducing Bushing	Ø 12 mm AL	QR24
1590933	RA6-QR24	Reducing Bushing	Ø 3/8" AL	QR24
1590934	RA7-QR24	Reducing Bushing	Ø 1/4" AL	QR24
1590937	PE1-QR24	Position Element	Base unit for postioning element-No bushing - for AL bushings	QR24
1590959	RA8-QR24	Reducing Bushing	Blanking plug for positioning element AL	QR24
1590969	RA9-EQR24	Reducing Bushing	Ø 1/2" SS	QR24
1590970	RA10-EQR24	Reducing Bushing	Ø 5/8" SS	QR24
1590971	RA11-EQR24	Reducing Bushing	Ø 3/4" SS	QR24
1593019	RA1-EQR24	Reducing Bushing	Ø 20mm SS	QR24
1590938	SP1-QR24	Protective Shield	Protective plate for positioning element AL	QR24
1590939	SP2-QR24	Protective Shield	Protective plate for positioning element with through hole Ø 22 mm Aluminum	QR24
100003689	SP5-QR24	Protective Shield	Protective plate for positioning element plastic PA6	QR24

Temperature Sensors Family

Programmable & Probe Versions

Temperature sensors are typically used in applications where lubrication, hydraulics and cooling are critical. As part of the Focus+ Program, we have included an assortment of temperature sensing products and accessories to solve a range of applications. From fully programmable, rotatable sensing heads to standalone probes and mounting accessories, you'll find solutions to fit your temperature sensing needs.

- Platinum RTD sensing elements
- Fast response times
- IO-Link communication enabled (depending on variant)



Material ID	Part Number	Body Style	Sensing Range	Operating Voltage	Output	Operating Temperature Range	Special Features
100003640	TS720-LI2UPN8-H1141	Rotatable	Probe dependent	17 - 33 VDC	Switching / Analog - Programmable	-40 - 80 °C	IO-Link
9910645	TP-203A-CF-H1141-L050	3 mm probe	-50 - 500 °C	12 - 24 VDC	Resistance	-40 - 120 °C	Bendable
9910402	TP-203A-CF-H1141-L100	3 mm probe	-50 - 500 °C	12 - 24 VDC	Resistance	-40 - 120 °C	Bendable
9910475	TP-206A-CF-H1141-L100	6 mm probe	-50 - 500 °C	12 - 24 VDC	Resistance	-40 - 120 °C	Bendable

Mounting Accessories

Material ID	Part Number	Body Style	Special Features	Process Connection
9910416	THW-3-N1/4-A4-L050	Compatible with 3 mm probes	Thermowell	1/4" NPT
9910414	THW-3-N1/8-A4-L050	Compatible with 3 mm probes	Thermowell	1/8" NPT
9910463	THW-6-N1/2-A4-L050	Compatible with 6 mm probes	Thermowell	1/2" NPT
9910408	CF-M-3-N1/4-A4	Compatible with 3 mm probes	Compression Fitting	1/4" NPT
9910406	CF-M-3-N1/8-A4	Compatible with 3 mm probes	Compression Fitting	1/8" NPT
9910529	CF-M-6-N1/2-A4	Compatible with 6 mm probes	Compression Fitting	1/2" NPT

Ultrasonic Sensors Family

18 mm Barrel with IO-Link

As part of our Focus+ Program, Turck is offering ultrasonic sensors with IO-Link. Ultrasonic sensors offer non-contact presence detection that use sound waves to detect the presence or absence of a target. Applications include measuring the profile of bulk material on a conveyor belt, level monitoring of non-foamy liquids, sag control and more.

- Small blind zones
- Capable of detecting transparent objects
- Fully programmable
- Chrome plated brass barrel housing



Material ID	Part Number	Body Style	Sensing Range	Operating Voltage	Output	Operating Temperature Range	Special Features
100039011	RU150D-M18M-LIU8X2-H1141	18 mm Barrel	15 - 150 cm	18 - 30 VDC	Switching, Analog, IO-Link	-25 - 70 °C	IO-Link
100039008	RU80D-M18M-UPN8X2-H1141	18 mm Barrel	8 - 80 cm	18 - 30 VDC	Switching, IO-Link	-25 - 70 °C	IO-Link

Valve Sensors Family

Sensors for Rotary Actuators

Turck's valve sensors offer reliable monitoring of automated valve actuator positioning. Available with a wide assortment of mounting accessories. These are ideal for nearly any valve actuator.

- Small, self-contained package
- Mounting possible on all standard actuators
- Dual outputs for open and close position monitoring



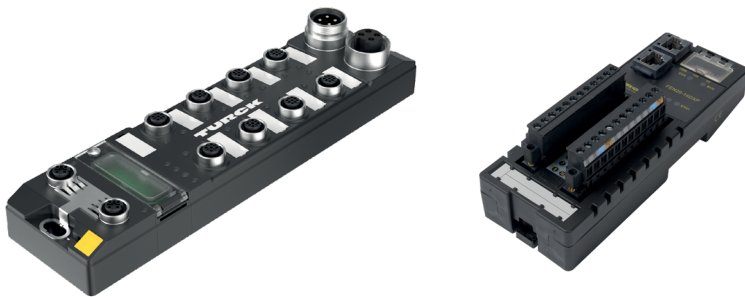
Material ID	Part Number	Body Style	Rotation Range	Operating Voltage	Output	Operating Temperature Range
1650022	NI4-DS20-2AP6X2	20 mm Height	90°	10 - 30 VDC	Switching	-25 - 70 °C
1650020	NI4-DS20-2AP6X2-H1141	20 mm Height	90°	10 - 30 VDC	Switching	-25 - 70 °C
1569901	NI4-DSU35-2AP4X2-H1141	35 mm Height	90°	10 - 65 VDC	Switching	-25 - 70 °C

Fieldbus Solutions

Compact Multiprotocol I/O Module & Station

Turck's Focus+ TBEN-L4-16DXP I/O module for Ethernet is a rugged IP67-rated device that connect networks, sensors, and other devices for reliable control and communication. The FEN20 family is rated IP20 and is ideal for control cabinets. Multiprotocol capability in both devices reduces the number of components needed in stock since it works with Ethernet/IP, PROFINET or Modbus TCP.

- 16 configurable channels
- Multiprotocol functionality automatically senses which protocol to use
- Integrated Ethernet switch
- Compact form factor for application flexibility



Material ID	Part Number	Protocol	Functionality	Inputs	Outputs	In/Out Configurable	IP Rating
6814012	TBEN-L4-16DXP	Multiprotocol (EIP/Modbus/Profinet)	Multiprotocol Digital In/Out Device	0	0	16	IP67
6931089	FEN20-16DXP	Multiprotocol (EIP/Modbus/Profinet)	Multiprotocol Digital In/Out Device	0	0	16	IP20
6931090	FEN20-4DIP-4DXP	Multiprotocol (EIP/Modbus/Profinet)	Multiprotocol Digital In/Out Device	4	0	4	IP20
6814009	TBEN-L4-16DIP	Multiprotocol	Digital In Device	16	0	0	IP67
6814010	TBEN-L4-8DIP-8DOP	Multiprotocol	Digital In/Out Device	8	8	0	IP67
6814023	TBEN-S1-8DXP	Multiprotocol	Digital In/Out Device	0	0	8	IP67



Fieldbus Solutions

Multiprotocol IO-Link Master

The multiprotocol IO-Link masters that are part of our Focus+ Program provide a flexible solution for emerging IoT applications. These devices support a range of protocols, including Ethernet/IP, PROFINET or Modbus TCP. Turck's IO-Link masters can be installed in a control cabinet or directly in the field as remote I/O, depending on the model chosen.

- Offers 4 - 8 master channels, depending on model
- Serves as a gateway between the IO-Link devices and a control system
- Multiprotocol functionality automatically senses which protocol to use
- Integrated web server



Material ID	Part Number	Protocol	Functionality	Inputs	Outputs	In/Out Configurable	IP Rating
6814082	TBEN-L4-8IOL	Multiprotocol (EIP/Modbus/Profinet)	Multiprotocol IO-Link Master (8 channel)	8 (No IOL)	4	4	IP67
6814140	FEN20-4IOL	Multiprotocol (EIP/Modbus/Profinet)	Multiprotocol IO-Link Master (4 channel)	0	0	4 (No IOL)	IP20
200011348	FEN20-8IOL	Multiprotocol (EIP/Modbus/Profinet)	Multiprotocol IO-Link Master (8 channel)	8 (No IOL)	0	8	IP20

IO-Link Hubs, In Cabinet/On Machine

Turck's Focus+ IO-Link hubs are a compact, cost-effective choice for decentralized automation applications. Sensors and actuators can be connected to the hub with a standard cable with an M12 connector (TBIL). Hubs also simplify wiring and engineering efforts.

- Connects digital signals to an IO-Link master
- 8 - 16 digital channels, depending on model
- Solutions for in cabinet (IP20) or on machine (IP65-69K)
- 18 - 30 VDC



Material ID	Part Number	Protocol	Functionality	Inputs	Outputs	In/Out Configurable	IP Rating
6814102	TBIL-M1-16DXP	IO-Link	IO-Link Hub	0	0	16	IP67
100005646	FIL20-8DXP	IO-Link	IO-Link Hub	0	0	8	IP20
100028254	FIL20-16DXP	IO-Link	IO-Link Hub	0	0	16	IP20

Fieldbus Solutions

Industrial Ethernet Switches

Flexible industrial network solutions featuring robust IP30 in-cabinet and rugged IP67 on-machine switches.

- Managed and unmanaged options
- IP30 in-cabinet or IP67 on-machine
- Gig-port options
- Multiprotocol Support on managed switch (Ethernet/IP, Profinet, and Modbus TCP)



Material ID	Part Number	Functionality	Ports	Connectors	IP Rating
100004426	TBEN-L4-SE-M2	Managed Switch	10	2 M12 X-Code / 8 M12 D-Code	IP67
100028460	TBEN-L4-SE-U1	Unmanaged Switch	8	8 M12 D-Code	IP67
100049175	TNIC-UX-5FE	Unmanaged Switch	5	5 RJ45	IP30
100049176	TNIC-UX-8FE	Unmanaged Switch	8	8 RJ45	IP30

IP67 Safety I/O For EtherNet/IP & CIP Safety

The TBIP hybrid safety block I/O module included in Focus+ combines standard and safety inputs/outputs in a single device. This enables the device to be adapted flexibly to the signal requirements of your machine. The module can operate with external safety PLCs or also as a stand-alone remote safety controller.

- Dual-channel safety inputs
- Configurable dual-channel inputs or PP/PM switching outputs
- Remote safety IO or Safety controller modes



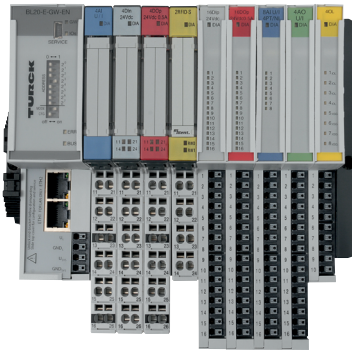
Material ID	Part Number	Protocol	Functionality	Inputs	Outputs	In/Out Configurable	IP Rating
100001827	TBIP-L4-4FDI-4FDX	CIP Safety	Full Safety Module	4	0	4	IP67
100000360	TBIP-L4-FDIO1-2IOL	CIP Safety	Hybrid Safety Module	2	0	2	IP67

Fieldbus Solutions

BL20 Modular IO System

Designed for cabinet installation, the BL20 modular I/O system acts as a flexible, fieldbus-independent platform for connecting sensors, actuators, and other devices to controllers in automation systems, allowing for remote I/O and even standalone programming with its various specialized “slices” (modules) for digital and analog monitoring. It offers a multiprotocol gateway to automatically detect which protocol to use.

- Economical and expandable I/O for in-cabinet applications
- Multiprotocol gateway automatically detects which protocol to use
- Integrated ethernet switch
- Up to 32 slices per gateway



Material ID	Part Number	Protocol	Functionality	I/O Count/Type	IP Rating
6827329	BL20-E-GW-EN	Multiprotocol Ethernet	Gateway	Gateway	IP20
6827231	BL20-E-16DI-24VDC-P	Depends on Gateway	I/O Slice	16 Digital Input	IP20
6827230	BL20-E-16DO-24VDC-0.5A-P	Depends on Gateway	I/O Slice	16 Digital Output	IP20
6827325	BL20-E-8AI-U/I-4PT/N/I	Depends on Gateway	I/O Slice	8 Analog Input	IP20
6827328	BL20-E-4AO-U/I	Depends on Gateway	I/O Slice	4 Analog Output	IP20
6827385	BL20-E-4IOL	Depends on Gateway	IO-Link Master	4 IO-Link	IP20

Fieldbus Solutions

BL67 Modular IO System

A Turck BL67 is a rugged, IP67-rated, modular and expandable remote I/O system featuring plug-and-play electronic modules (digital, analog, RFID) on passive base modules, connected by a gateway to various industrial Ethernet protocols (PROFINET, EtherNet/IP, Modbus TCP). This allows for flexible, easy-to-maintain machine-level connectivity in harsh environments. As part of the Focus+ Program, a gateway, I/O slices, IO-Link master and a base are included.

- Expandable I/O for on-machine applications
- Multiprotocol gateways automatically detect which protocol to use
- Up to 32 slices per gateway
- Slices can be replaced under power



Material ID	Part Number	Protocol	Functionality	I/O Count/Type	IP Rating
6827392	BL67-GW-EN-4F	Multiprotocol Ethernet	Gateway	Gateway	IP67
6827170	BL67-8DI-P	Depends on Gateway	I/O Slice	8 Digital Inputs	IP67
6827172	BL67-8DO-0.5A-P	Depends on Gateway	I/O Slice	8 Digital Outputs	IP67
6827222	BL67-4AI-V/I	Depends on Gateway	I/O Slice	4 Analog inputs	IP67
6827386	BL67-4IOL	Depends on Gateway	IO-Link Master	4 IO-Link	IP67
6827187	BL67-B-4M12	N/A	Base	4 M12 Connections	IP67

UHF RFID Solutions

Q180 UHF Transceiver/Read/Write Device & Accessories

Turck's Q180 RFID read/write transceivers allow connections of 4 external UHF antennas and have an integrated CODESYS runtime. These Ethernet-capable solutions speed the implementation of UHF RFID applications, and thanks to external passive antennas, they are also ideal in factories for identification of objects throughout the production process. As part of the Focus+ Program, Turck offers a transceiver, external antenna and mounting bracket. The Q180 is rated IP67, offers multiprotocol capabilities for multiple platform use, and is easy to set up thanks to web-based configuration.

- Multiprotocol support (EtherNet/IP, Profinet and Modbus TCP)
- 4 digital, switchable inputs and outputs
- Rated IP67 for rugged environments
- Easy to set up



Material ID	Part number	Product Type	Operating Frequency	Communication Protocol	Supported Platform	Notes
100000934	TN-UHF-Q180L300-NA-CDS	Read/Write	902 ... 928 MHz	Multiprotocol Ethernet	CODESYS V3, PLC Runtime	Requires at least 1 external antenna
100028596	TN-UHF-ANT-Q150-FCC	Antenna	902 ... 928 MHz	N/A	N/A	RHCP Antenna Polarization, 5.5dBic Gain (FCC)
100029071	TN-UHF-ACCSY-VESA100-MOUNT	Mounting Bracket	N/A	N/A	N/A	For Reader and/or Antenna

UHF RFID Coaxial Antenna Cables



Material ID	Part number	Length
100028192	TN-UHF-CBL-HF240-RPTNC-2-SMA	2 m
100028194	TN-UHF-CBL-HF240-RPTNC-6-SMA	6 m

UHF RFID Tags

860 - 960 MHz

As part of the Focus+ Program, Turck offers three types of smart labels. These data carriers are offered in 100 piece packs for convenience and evaluation needs.

- They operate in the Ultra-High Frequency range, which can enable longer read ranges
- Ideal for high-speed data transfer



Material ID	Part number	Frequency	Product Type	Memory Size	Mount on Metal	Notes	Dimension
100050384	TW860-960-L44-18-P-B34-100PCS	860 ... 960 MHz, Global	Smart Label	34 bytes	No	100 Piece Sample Roll	44 x 18 mm
100050386	TW860-960-L54-34-P-B36-100PCS	860 ... 960 MHz, Global	Smart Label	36 bytes	No	100 Piece Sample Roll	54 x 34 mm
100050388	TW860-960-L90-12-P-B210-100PCS	860 ... 960 MHz, Global	Smart Label	210 bytes	No	100 Piece Sample Roll	90 X 12 mm



HF RFID Solutions

HF Transceivers, BL Ident

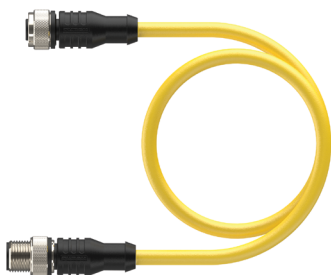
Turck's proprietary RFID communication protocol, BL ident®, offers fast and robust data transfer between the transceiver and interface module with high information fidelity. The BL ident family is characterized by their rugged design, flexibility, and seamless integration into various industrial networks. As part of the Focus+ Program, you'll find variants designed for demanding applications such as production control, logistics, and quality assurance processes. Up to 32 HF read/write heads can be connected to a single channel using the HF bus mode for static applications (TN-M18-H1147/C53).

- Fast data transfer rates, capable of reading and writing data at speeds up to 0.5 ms per byte
- Built for harsh industrial environments with high protection ratings up to IP69K
- A range of sizes and designs available



Material ID	Part number	Product Type	Operating Frequency	Communication Protocol	Bus Mode Variant	Protection Class	Features
7030553	TB-Q08-0.15-RS4.47I	Read / Write Transceiver	13.56 MHz	Depends on Interface Selection	No	IP67	Compact Design
7030001	TB-M18-H1147	Read / Write Transceiver	13.56 MHz	Depends on Interface Selection	No	IP67	TB-embeddable
7030002	TN-M18-H1147	Read / Write Transceiver	13.56 MHz	Depends on Interface Selection	No	IP67	TN-non-embeddable
7030728	TN-M18-H1147/C53	Read / Write Transceiver	13.56 MHz	Depends on Interface Selection	Yes	IP67	TN-non-embeddable
7030004	TN-M30-H1147	Read / Write Transceiver	13.56 MHz	Depends on Interface Selection	No	IP67	TN-non-embeddable
7030006	TN-CK40-H1147	Read / Write Transceiver	13.56 MHz	Depends on Interface Selection	No	IP67	TN-non-embeddable
7030424	TNSLR-Q42TWD-H1147	Read / Write Transceiver	13.56 MHz	Depends on Interface Selection	No	IP69K	Washdown
7030007	TN-Q80-H1147	Read / Write Transceiver	13.56 MHz	Depends on Interface Selection	No	IP67	TN-non-embeddable
7030230	TNLR-Q80-H1147	Read / Write Transceiver	13.56 MHz	Depends on Interface Selection	No	IP67	TN-non-embeddable

BL Ident Cables



Material ID	Part number	Length
U3-01240	RK 4.5T-2/S2501	2 m
U3-01243	RK 4.5T-2-RS 4.5T/S2501	2 m
U3-01247	RK 4.5T-5-RS 4.5T/S2501	5 m
U3-01241	RK 4.5T-10-RS 4.5T/S2501	10 m

HF RFID Solutions

RFID Interfaces, BL Ident

This family of interface solutions enables seamless data communication between RFID read/write heads and higher-level control systems. They are based on Turck's proven block I/O families. They can distribute control or pre-process data using ARGEE, Turck's proprietary programming environment that serves as a field logic controller. The multiprotocol devices use data from HF read/write heads for control via EtherNet/IP, PROFINET or Modbus TCP.

- Designed for easy integration and scalability
- Seamless data communication to higher-level control systems
- Up to IP69K, ensuring durability in challenging conditions
- Ethernet/IP, PROFINET, and Modbus TCP platforms



Material ID	Part number	Communication Protocol	RFID Channels	Digital I/O Channels
100002462	TBEN-L4-4RFID-8DXP	Multiprotocol Ethernet	4	8
6814029	TBEN-S2-2RFID-4DXP	Multiprotocol Ethernet	2	4

HF RFID Tags, 13.56 MHz



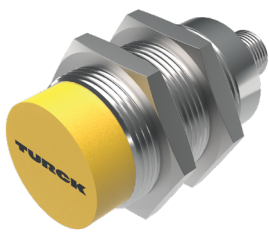
Material ID	Part number	Product Type	Frequency	Dimensions	Memory Size	Mount on Metal	Protection Class	Features
100047102	TW-R15-B320	Hard Tag	13.56 MHz	15 mm Diameter	320 bytes	No	IP68	Extended Storage Temperature Range, Password Protected Memory
100027253	TW-R16-K2/C63	Hard Tag	13.56 MHz	16 mm Diameter	2000 bytes	No	IP69K	Extended Storage Temperature Range
100005245	TW-R30-B320	Hard Tag	13.56 MHz	30 mm Diameter	320 bytes	No	IP69K	Password Protected Memory
6900506	TW-R30-K2	Hard Tag	13.56 MHz	30 mm Diameter	2000 bytes	No	IP69K	Password Protected Memory
100005246	TW-R50-B320	Hard Tag	13.56 MHz	50 mm Diameter	320 bytes	No	IP69K	Password Protected Memory
6900507	TW-R50-K2	Hard Tag	13.56 MHz	50 mm Diameter	2000 bytes	No	IP69K	Password Protected Memory

HF Transceivers

M18, M30, Q40 Options with IO-Link

IO-Link RFID read/write heads offer easy set up for close-range HF applications. These devices are rated IP67 for rugged environments. The combination of IO-Link and RFID provides a cost-effective solution for simple identification tasks and provides added diagnostic information. Multiple housing sizes are available as part of our Focus+ products stocking program.

- A cost effective solution for simple identification tasks
- Rated IP67 for industrial use
- Uses standard M12 non-shielded cordsets
- Uses the same data carriers as our BL Ident HF read/write heads



Material ID	Part number	Product Type	Operating Frequency	Communication Protocol	Process Data Width
100012160	TN-M18-IOL2-H1141	Read / Write Transceiver	13.56 MHz	IO-Link	256 bit
100012162	TN-M30-IOL2-H1141	Read / Write Transceiver	13.56 MHz	IO-Link	256 bit
100012163	TN-Q40-IOL2-H1141	Read / Write Transceiver	13.56 MHz	IO-Link	256 bit

Q130 All-In-One HF RFID Transceiver

Easily read or write data to RFID tags traveling on products, tools and carriers with the all-in-one Q130 HF read/write head, included in Focus+. The Q130 is ideal for automatic identification and tracking applications where a single read point is needed. The Q130 HF read/write head is capable of fast processing speeds to successfully read and write data carriers on the fly at high conveyor rates, for example.

- All-in-one read/write head and Ethernet interface, eliminates need for separate block I/O and cable
- Fast processing power ensures accuracy in higher speed applications
- Extended temperature range of -40 to +70 °C, for use in cold storage
- Multiprotocol support (Ethernet/IP, Profinet and Modbus TCP)



Material ID	Part number	Product Type	Operating Frequency	Communication Protocol	Notes
100004502	TNSLR-Q130-EN	HF Read / Write Transceiver	13.56 MHz	Multiprotocol Ethernet	Includes Integrated Ethernet Switch

Notes

A large grid of graph paper for taking notes, consisting of 20 columns and 30 rows of small squares.

TURCK



Over 30 subsidiaries and
60 representatives worldwide

Printed in USA

©2026 by Turck Inc. All rights reserved. No part of the
publication may be reproduced without written permission.

100028 B 01/26

www.turck.us